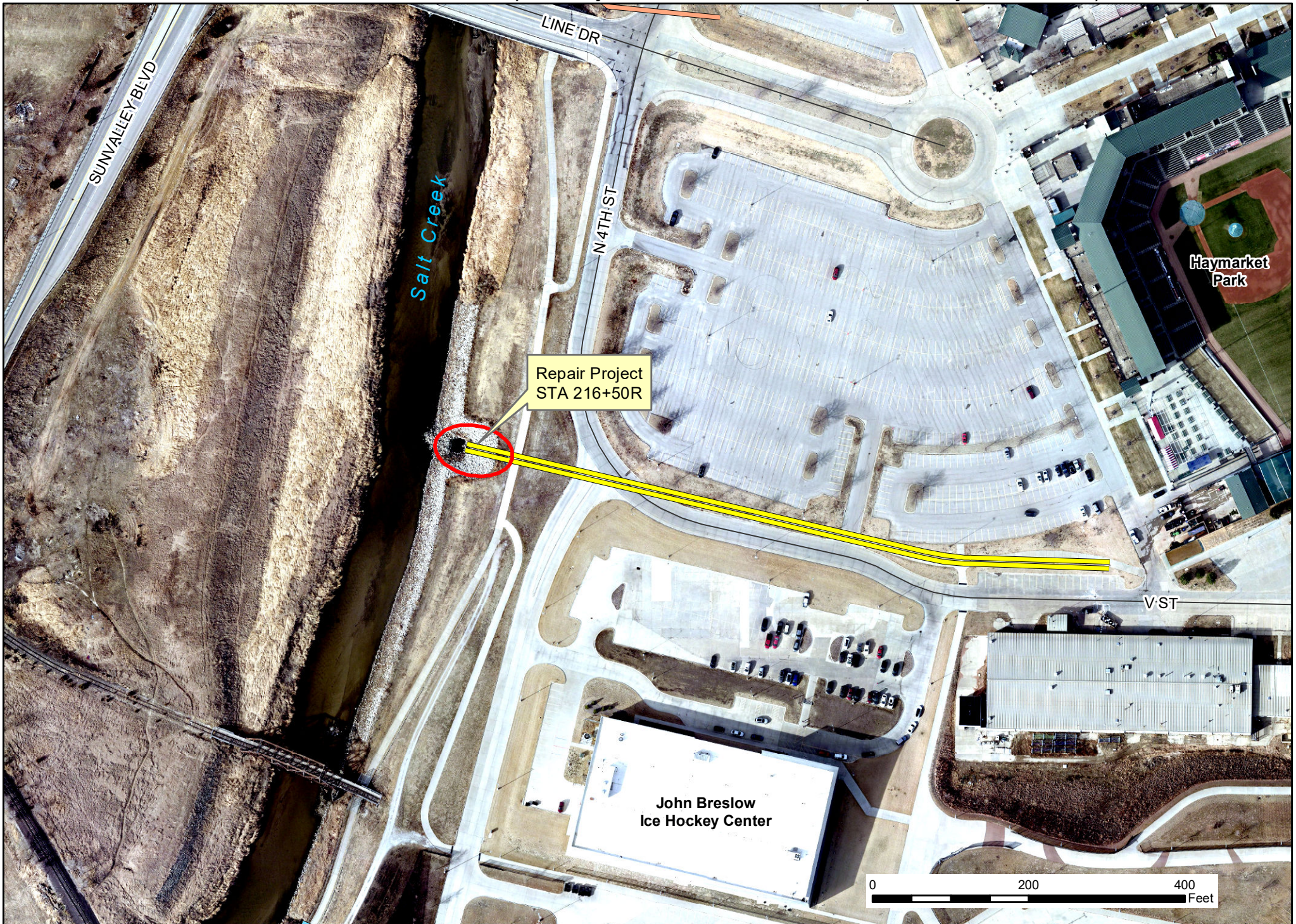


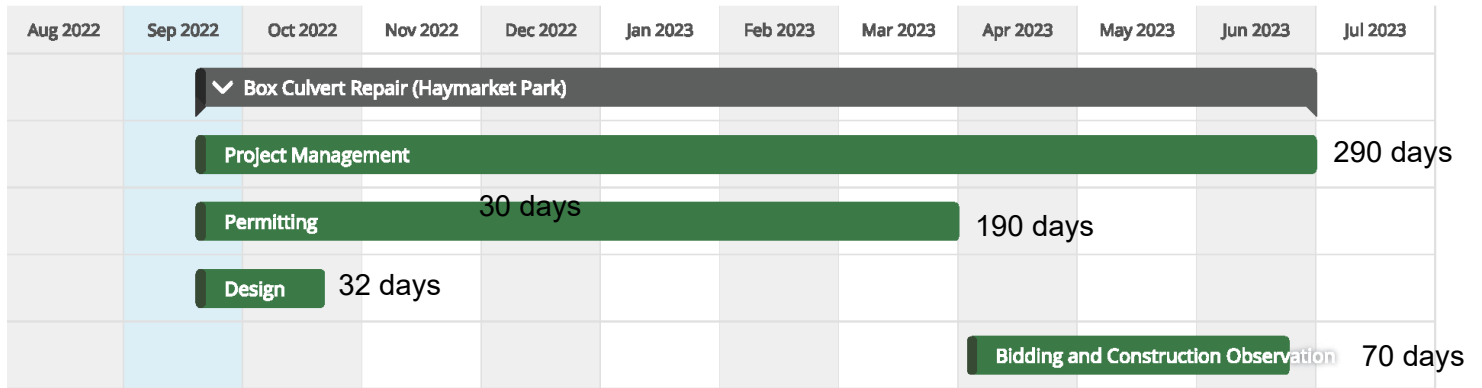


Salt Creek Levee Structure Repair Project at Stations 216+50R (near Haymarket Park)



LEVEE PIPE REPAIR NEAR HAYMARKET PARK (STA 216+50R)

Project Schedule



Project coordination required with  US Army Corps of Engineers. No additional coordination required with landowners.

Project funded by  Lower Platte South NRD

Project Map

