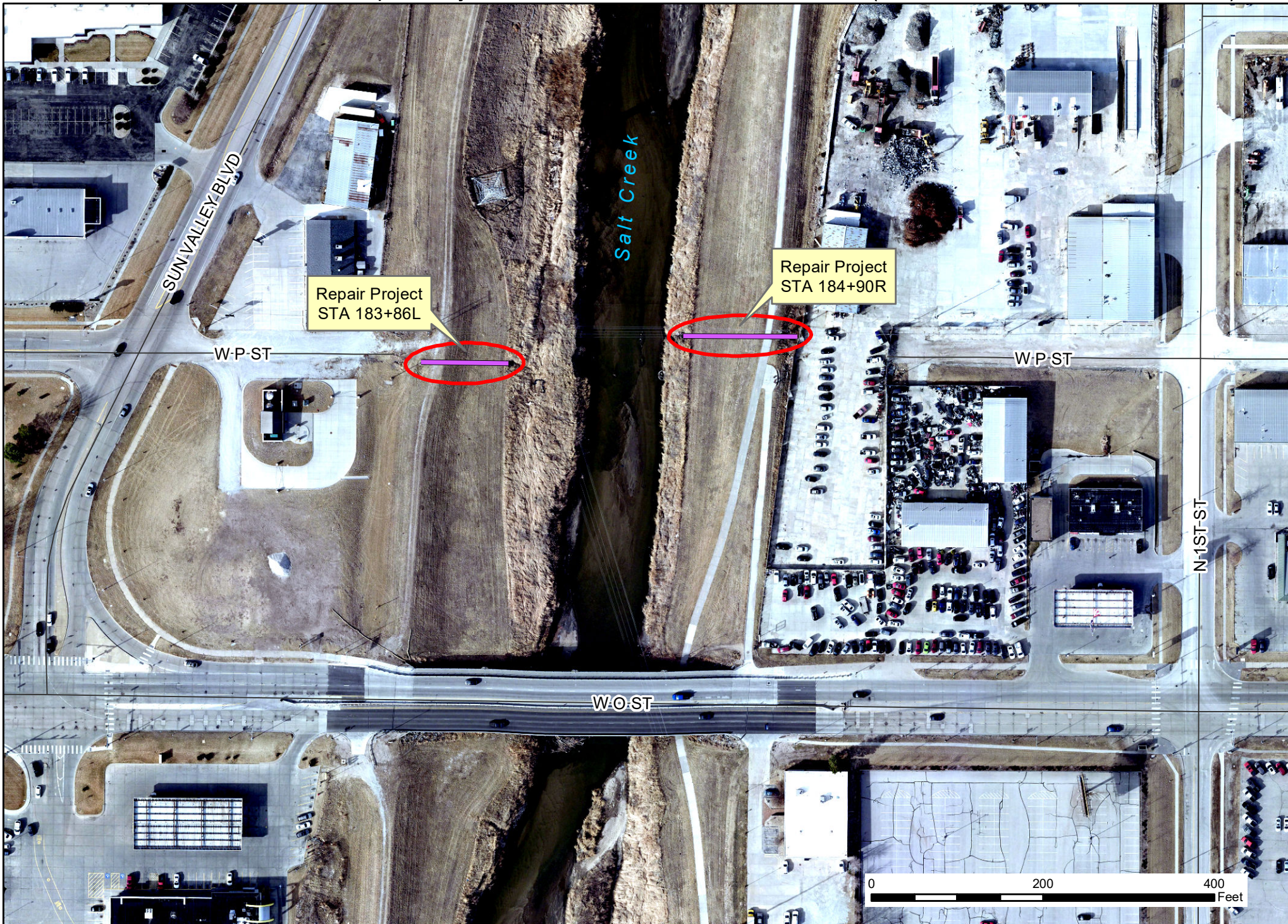


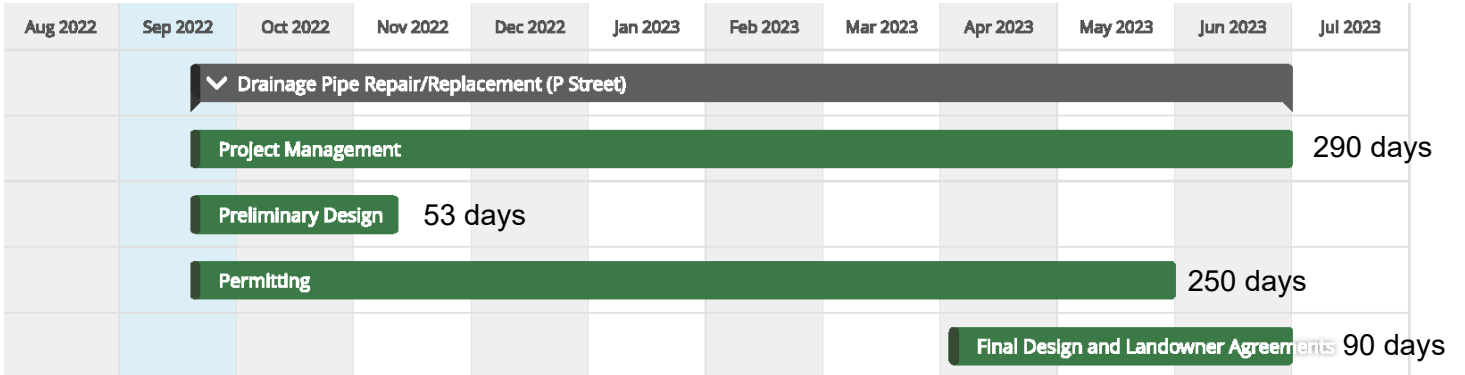


Salt Creek Levee Structure Repair Project at Stations 183+86L and 184+90R (North of W 'O' Street, Lincoln, NE)



PIPE LEVEE REPAIR AND REPLACEMENT PROJECT NEAR P STREET (STA 183+86L AND 184+90R)

Project Schedule



Project coordination required with  US Army Corps of Engineers. Additional landowner coordination required for right bank culvert replacement.

Project funded by  Lower Platte South NRD

Project Map

