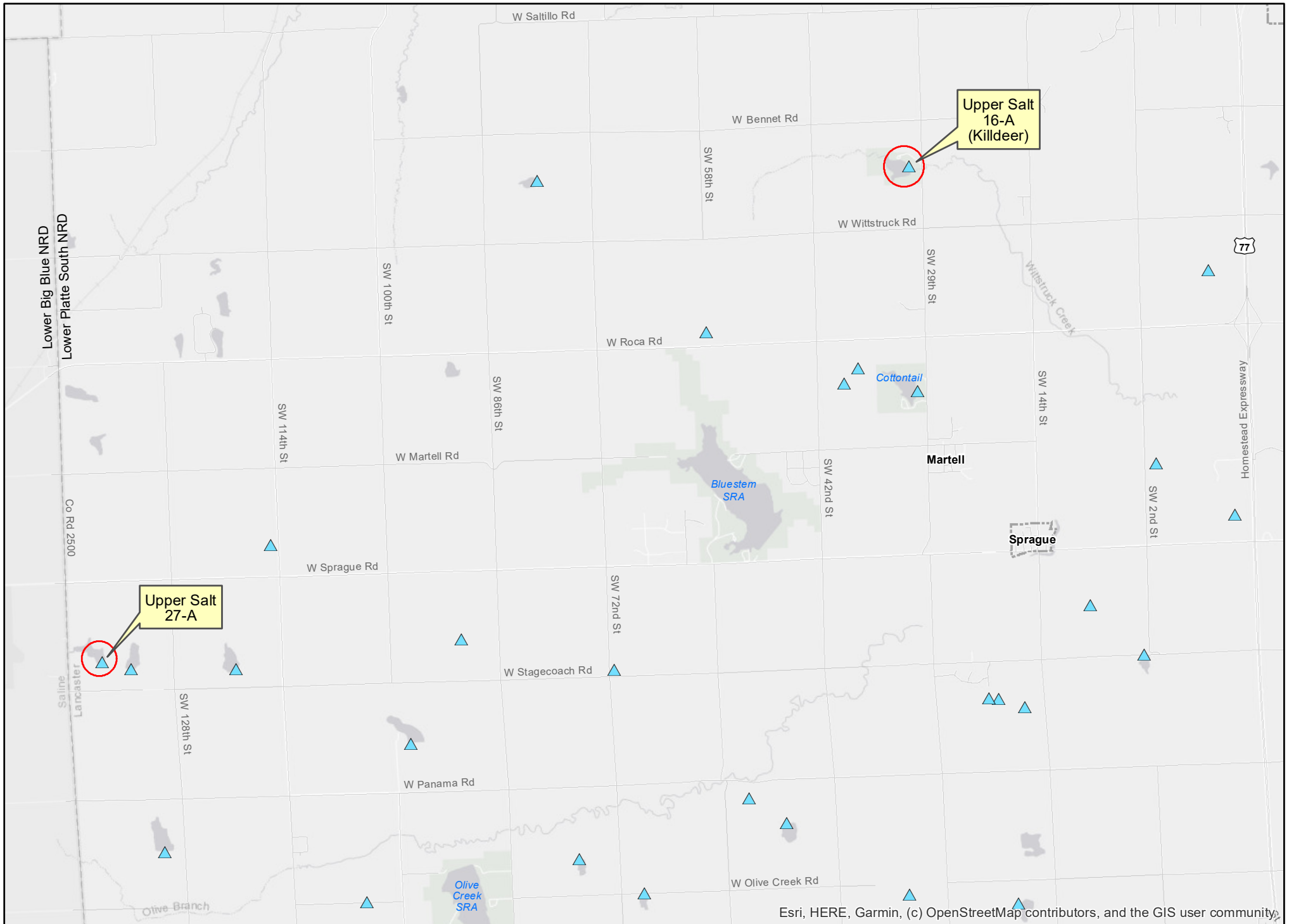




Flood Control Structure Repair Locations (August 2022)



Esri, HERE, Garmin, (c) OpenStreetMap contributors, and the GIS user community



Upper Salt 27-A - Sec 31, T8N-R5E, Lancaster Co.





Upper Salt 16-A (Killdeer - G/P) - Sec 8, T8N-R6E, Lancaster Co.

