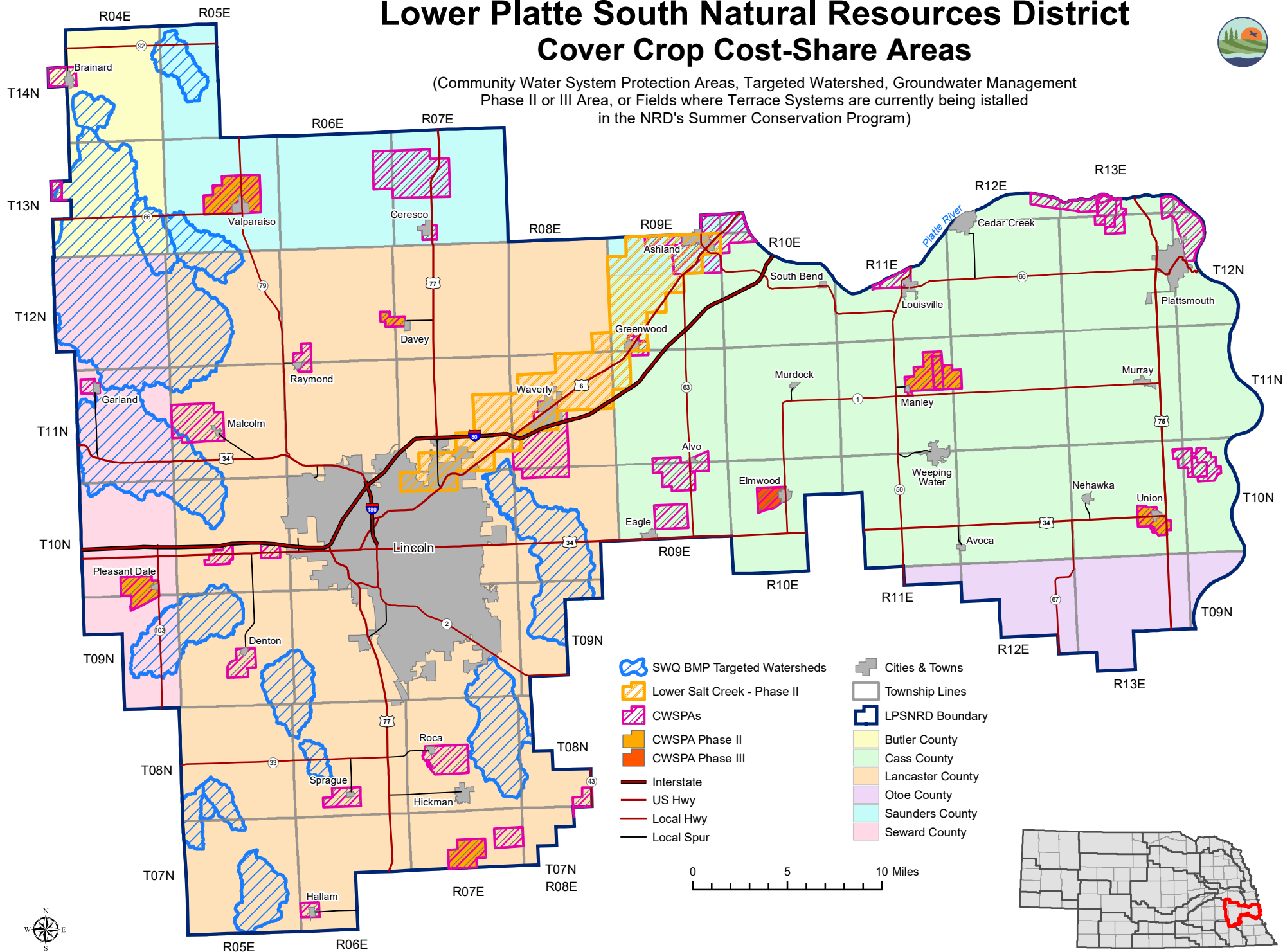


Lower Platte South Natural Resources District Cover Crop Cost-Share Areas



(Community Water System Protection Areas, Targeted Watershed, Groundwater Management Phase II or III Area, or Fields where Terrace Systems are currently being installed in the NRD's Summer Conservation Program)



PURPOSE

Reduce erosion, increase soil organic matter, capture and recycle nutrients, increase biodiversity, suppress weeds, manage soil moisture, and minimize/reduce soil compaction by utilizing cover crops within selected areas of LPSNRD.

ELIGIBILITY

Land shall be located in a Community Water System Protection Area, a Targeted Watershed, or a **Ground Water Management Phase II or III Area** within LPSNRD (Refer to the Cover Crop Cost Share Areas map at LPSNRD.org. Click on Programs, Landowner Cost-Share, then Land Treatment.) **or fields where terrace systems are currently being installed in the NRD's Summer Conservation Program.** Cover crops may be established on Highly Erodible (HEL) and Non-Highly Erodible (NHEL) land that is currently in a continuous no-till cropping system. HEL fields where corn has been cut for silage are not eligible. Cover crops shall not be harvested, hayed or grazed. Each participant will enroll a total of 20-to-80 acres.

PROCEDURE

Landowners will contact their local NRCS Field Office to determine land eligibility and prepare an application prior to October 1st. Applications will be reviewed by NRD staff and approved by the General Manager.



TERMS

- Cropland must be located in a Community Water System Protection Area, a Targeted Watershed Area, a **Ground Water Management Phase II or III Area** located within the LPSNRD, **or fields where terrace systems are currently being installed in the NRD's Summer Conservation Program.**
- Cover crop options include: #1 rye only; #2 rye/rape/radish; or #3 "deluxe cocktail" mix (5 species minimum).
- Payment rate/acre: Single species \$25/acre; multiple species \$30/acre.
- Annual payment limit of \$2,000 per farm/landowner.
- Application deadline is October 1st
- Cover crops must be seeded prior to October 1st for aerial application and November 1st if planted with a drill. The producer is responsible for arranging seeding (either by aerial or ground application).
- The producer will obtain NE-CPA-7 Cover Crop Design Worksheet from NRCS prior to seeding cover crop for approved species, seeding rates, and seeding dates.
- The program will also comply with NRCS Code 340 - Cover Crop Conservation Practice Standards that may be found at <https://efotg.sc.egov.usda.gov/>
- HEL fields where corn has been cut for silage are not eligible. Cover crops shall not be harvested, hayed or grazed.
- Landowner will provide NRCS with completed NE-CPA-7, seed bills, and aerial/drill application bills prior to NRCS certification of cover crop.
- NRCS will certify successful completion to the NRD upon termination of cover crop per NRCS Cover Crop Termination Guidelines, without inversion tillage. The NRD will make payment to the landowner after NRCS certification.

APPLY

1. Contact your county NRCS office
2. Meet with NRCS/NRD personnel to complete enclosed application and other required supplemental applications
3. Submit enclosed application to NRCS (NRCS will forward completed application to LPSNRD)

PRIORITY

Priority will be given based on the date of application. The earliest applications will be approved up to the district's budgeted amount for the current fiscal year. Once the budgeted amount is reached, applications will not be approved.

WHERE TO BEGIN

1. Contact your county NRCS office to complete enclosed application and other required supplemental applications:

Cass County NRCS
Weeping Water: (402) 267-2015 ext 3

Lancaster County NRCS
Lincoln: (402) 423-9683 ext 3

Butler County NRCS
David City: (402) 367-3074 ext 3

Otoe County NRCS
Syracuse: (402) 269-3466 ext 3

Saunders County NRCS
Wahoo: (402) 443-4106 ext 3

Seward County NRCS
Seward: (402) 649-5231 ext 3

2. If you have questions, contact the LPSNRD office at (402) 476-2729