



LOWER PLATTE SOUTH natural resources district

3125 Portia Street | P.O. Box 83581 • Lincoln, Nebraska 68501-3581 | P: 402.476.2729 • F: 402.476.6454 | www.lpsnrd.org

MEMORANDUM

Date: January 11, 2023

To: Lower Platte South Natural Resources District Board of Directors

From: Will Inselman, Resources Coordinator *WI*

Subject: Recreation, Forestry & Wildlife Subcommittee Meeting Information

The Lower Platte South Natural Resources District (LPSNRD) Recreation, Forestry, and Wildlife Subcommittee will meet at LPSNRD in the Large Conference Room at 4:30 p.m. on Tuesday, January 17th, 2022. There are two agenda items for consideration.

1. Approval of Agreement with Pheasants Forever – Safety Corners Pollinator Program

LPSNRD has interest in participating in a program offered by Pheasants Forever (PF), to be available for residents in our District. The Pollinator Safe Corners Program offers incentives to landowners who wish to establish pollinator friendly wildlife habitat at rural intersections where traditional cropping would obstruct the views of approaching traffic. Participants plant a native mix of short to mid-height grasses and wildflowers on 1-3 acres adjacent to an intersection. Last year, \$25,000.00 was budgeted for this program. This will be a 50/50 cost share, with PF picking up the other 50%. This will be on a first come, first served basis, with a cap of 37 acres total enrollment. This program requires a 5-year contract and landowners receive a one-time upfront payment of \$1,250.00/acre.

2. Approval of Bids for Bobcat Prairie Grassland Restoration Project Seed and Seeding

LPSNRD staff recently submitted a request for bids for the Bobcat Prairie Seed and Seeding Project to restore 115 acres of grassland on the property, currently dominated by a non-native, invasive grass. Bids requests we sent to three companies that can provide the specific services required of this planting. The low bid was received from Diversity Farms, Inc. of Dedham, Iowa. This company was able to meet all specifications in the bid for seed species and planting method. Staff would recommend awarding the low bid to Diversity Farms, Inc. at a total project cost of \$36,464.40. As a reminder, LPSNRD will provide \$25,000 and U.S. Fish and Wildlife Service will provide the remainder, \$11,464.40 towards the total project cost.



LOWER PLATTE SOUTH natural resources district

3125 Portia Street | P.O. Box 83581 • Lincoln, Nebraska 68501-3581 | P: 402.476.2729 • F: 402.476.6454 | www.lpsnrd.org

Staff Reports

1. Prairie Corridor on Haines Branch Update
2. Tree Clearing Project Update Videos

Attachments

PC: RF&W subcommittee file
Deborah Eagan

Pathway For Wildlife

Pollinator Safety Corners

Program Guidelines



LOWER PLATTE SOUTH
natural resources district

Program Background

The Pollinator Safety Corners program offers landowners incentives to establish new habitat at rural intersections where tall crops may obstruct the view of approaching traffic. Participants plant a diverse mix of short grasses and wildflowers to help provide an adequate sight distance at intersections. This program is limited to land within the Lower Platte South NRD. Minimum of 1 acre, maximum of 3 acres.

Allotment of Funds

Funding for the program is available on a first come, first serve basis.

Funding Sources

Funding comes from Pheasants Forever and the Lower Platte South NRD. Funds will cover the cost share for seed for projects, project signs, annual contract payments, program promotion, biologist technical assistance, program administration, and any other agreed upon expenses. The Lower Platte South NRD may provide cost-share assistance for establishment.

The Lower Platte South NRD will be invoiced annually for 50% of contract payment and cost-share costs.

Program Forms

Signed contract
Map outlining the project area
W9
Direct Deposit form (optional)

Program Requirements

- Must be located adjacent to an intersection.
- The goal of the program is to establish new wildlife and pollinator habitat on areas that do not have sufficient wildlife and pollinator habitat as well as increasing visibility of intersections for safety concerns.
- Minimum of 1 project sign on each area. Signs will be supplied.

- Violation of the contract will result in forfeiture of funds. Past forgone income payment and cost-share of the seed mixture will be invoiced to the landowner.
- Project size is a minimum of 1 acre and maximum of 3 acres. Projects over 3 acres can be considered for additional Pathway for Wildlife and NRD options.
- The project must be located within the Lower Platte South NRD
- Must be existing crop ground.

Sign Up Dates

There will be no official sign up dates for the program, it will be offered on a first come, first served basis; with approval from the PF State Office and the Lower Platte South NRD. When funding is exhausted, landowners will be placed on a waiting list for evaluation the following year. There is a 37 acre cap limit for the program.

Seed Mixtures

Seed mixtures will be designed by a Pheasants Forever Farm Bill Wildlife Biologist (FBWB). Only approved seed mixtures can be planted and no substitutions can be made without approval from the Farm Bill Wildlife Biologist.

Seed mixtures can be drilled or broadcasted with broadcast being preferred. Mowing may need to be conducted in order to keep annual weeds low prior to establishment. Vegetation height should not exceed 3ft.

Seed can be ordered through Pheasants Forever or another vendor and reimbursed a flat rate of \$75 per acre. If ordering through another vendor, detailed invoices must be submitted prior to reimbursement.

In order to ensure timely shipping of seed mixtures, contracts should be sent to the PF State Office before April 15th. Seed will be shipped directly to landowners if ordered through PF. Seed will be shipped with fluffy seeds separated from slick seeds for use in a no-till grass drill. If the landowner plans on broadcast seeding, the acres will need to be adjusted accordingly.

Local Pheasants Forever chapters have no-till grass drills for rent. To locate a local drill visit www.nebraskapf.com/chapter-equipment/

Cost Share and Forgone Income Payments

Five-year contracts are required. A one-time, upfront payment of \$1,250 per acre will be issued after seeding. Pollinator seed mixtures will be reimbursed at a flat rate of \$75 per acre. Direct deposit is optional and encouraged for faster and more secure payments. A W9 form is required for vendor setup before the first payment is made.

Project Signs

At least one project sign will be posted by the landowner or FBWB on each project area and left for the duration of the contract period. Signs will be provided at no cost to the landowner.

Ineligible costs

Landowners are responsible for site preparation and maintenance of the site. PF and the NRD will not cost share for drill rental, site preparation, planting costs, fencing, weed control, etc.

Monitoring

Monitoring will be done annually by a Pheasants Forever Farm Bill Biologist and/or the Lower Platte South NRD to ensure program compliance.

Program Tracking

The Pheasants Forever State Office will track program results and provide them to the NRD and PF chapters annually or upon request. Results will include dollars spent, acres, maps, legal addresses, and counties.

Program Contacts

John McClinton PF Farm Bill Wildlife Biologist III 8000 South 15 th St. Suite D Lincoln, NE 68512 John.McClinton@USDA.gov 402-423-9683	Kelsi Wehrman PF State Coordinator PO Box 146 Nelson, NE 68961 kwehrman@pheasantsforever.org 402-621-0744
Ashley Nelson PF Administrative Assistant 4721 South 58 th Street Lincoln, NE 68516 asnelson@pheasantsforever.org 402-416-2671	Will Inselman Resources Coordinator Lower Platte South NRD 3125 Portia St. Lincoln, NE 68521 402-476-2729

Pathway For Wildlife

Pollinator Safety Corners

Agreement



LOWER PLATTE SOUTH
natural resources district

This agreement entered into by Pheasants Forever, Inc. and the Lower Platte South NRD is for the program named “Pathway for Wildlife – Pollinator Safety Corners” also referred to as “Pollinator Safety Corners” (PSC).

The agreement begins February 1, 2023 and ends December 31, 2027.

Program Background

The Pollinator Safety Corners program offers landowners incentives to establish new habitat at rural intersections where tall crops may obstruct the view of approaching traffic. Participants plant a diverse mix of short grasses and wildflowers to help provide an adequate sight distance at intersections. This program is limited to land within the Lower Platte South NRD. Minimum of 1 acre, maximum of 3 acres.

The Lower Platte South NRD will provide 50% of the one-time, fore-gone income payment for the Pathway For Wildlife – Pollinator Safety Corners program not to exceed \$1250 per acre. The Lower Platte South NRD will pay 50% of seed cost in the form of a flat rate payment equaling a total of \$75 per acre. This commitment will be for a maximum of 37 acres of newly enrolled contracts per year for 5 years not to exceed \$25,000 per year. PF will invoice the NRD and request payment by June 30 of each year.

Funding for the program will be available on a first-come, first-served basis. Pheasants Forever State Office will send an invoice to the NRD for 50% of total costs which will equal \$662.50 per acre for the foregone income payment and seed. Establishment costs are not cost-shared through Pheasants Forever, however, can be cost-shared through the NRD, if desired.

Both parties agree to carry out the goals and objectives laid out in Attachment A – Program Guidelines. Both parties will communicate any necessary project modifications and landowner project violations.

This agreement will remain in effect for the term prescribed above unless sooner terminated by either party. If terminated, there shall be not less than 30 days written notice, unless otherwise mutually agreed. This agreement may be renewed, extended, or amended by mutual written agreement.

Contract contacts include:

<p>John McClinton PF Farm Bill Wildlife Biologist III 8000 South 15th St. Suite D Lincoln, NE 68512</p> <p>John.McClinton@USDA.gov 402-423-9683</p>	<p>Kelsi Wehrman PF State Coordinator PO Box 146 Nelson, NE 68961</p> <p>kwehrman@pheasantsforever.org 402-621-0744</p>
<p>Ashley Nelson PF Administrative Assistant 4721 South 58th Street Lincoln, NE 68516</p> <p>asnelson@pheasantsforever.org 402-416-2671</p>	<p>Will Inselman Resources Coordinator Lower Platte South NRD 3125 Portia St. Lincoln, NE 68521</p> <p>402-476-2729</p>

NRD Representative Signature and Date

Pheasants Forever Signature and Date

Pollinator Safety Corners



The Pollinator Safety Corners program is offered in the Lower Platte South NRD. This program offers landowners an option to establish wildlife and pollinator habitat on intersection corners where low visibility due to row crops is a safety concern. Corners already containing wildlife habitat are not eligible, as the objective of the program is to establish new wildlife and pollinator habitat and reduce the risk of collision due to lack of visibility.

Name: _____ County: _____
Address: _____ Legal: S: _____ T: _____ R: _____
City, State, Zip: _____ Acres: _____ One-Time Payment Rate: \$1250/ac
Contract Dates: _____ Seed Cost-share _____ Total Payment: _____

Project Requirements:

1. Seed mixtures are cost-shared at a flat rate of \$75 per acre, see Program Guidelines for details.
2. Landowners agree to pay remaining seed cost.
3. Landowners are responsible for site and ground preparation and planting of the seed mixture.
4. Cover practices must be maintained for 5 years and may not be grazed, hayed, or mowed (except for establishment purposes). Landowners are responsible for annual maintenance including noxious weeds and tree control.
5. Minimum of one project sign must be posted on each area.
6. Violation of contract requirements or contract cancellation results in forfeiture of past and future contract payments and reimbursement of all cost shared funds.
7. All contract and program guideline terms are in effect from the date of the landowner signature.
8. Area requirements are limited to a minimum of 1 acre and a maximum of 3 acres. Areas exceeding 3 acres *may* be accepted depending on available program funding and prior approval from Pheasants Forever and the Lower Platte South NRD.

Project Payments:

Project payments will be paid upfront as a one-time payment following seed planting. Projects will be inspected at least one-time per year to ensure compliance. Checks will be mailed from the PF Home Office and direct deposit is optional.

Landowner Signature and Date

NRD Representative Signature and Date

Pheasants Forever Signature and Date

Supporting Documents Needed:

Signed contract
Aerial photo
W9
Direct Deposit Form (optional)

Return To

Ashley Nelson
Habitat Partnership Specialist II
22954 Holdrege Street
Eagle, NE 68347
asnelson@pheasantsforever.org

Bobcat Prairie Grassland Restoration – Seed and Seeding Bid Specifications

Lower Platte South Natural Resources District

C/O: Will Inselman
3125 Portia St
Lincoln, NE 68521
402-432-5727
winselman@lpsnrd.org

There is one unit at Bobcat Prairie to be seeded with local ecotype native seed, totaling 115 acres. The area is in Section 35-T9N-R5E, Lancaster County, off Rokeby Rd and SW 70th, 2 miles southeast of Denton, Nebraska. The project site has already undergone seed bed preparation and has appropriate seed bed for dormant season or growing season planting.

Seed: All seed must be local ecotype seed collected in the eastern ½ of Nebraska or western ½ of Iowa. All seed must contain all species listed in the seed list below and meet the total pure live seed (PLS) for the 115-acre project. Limited seed substitutions are allowed with NRD permission.

Seeding: The bidder must also be able to seed the project area using a broadcast method followed by culti-packing. Seeding can take as soon as the bid is awarded, but prior to March 15, 2023.

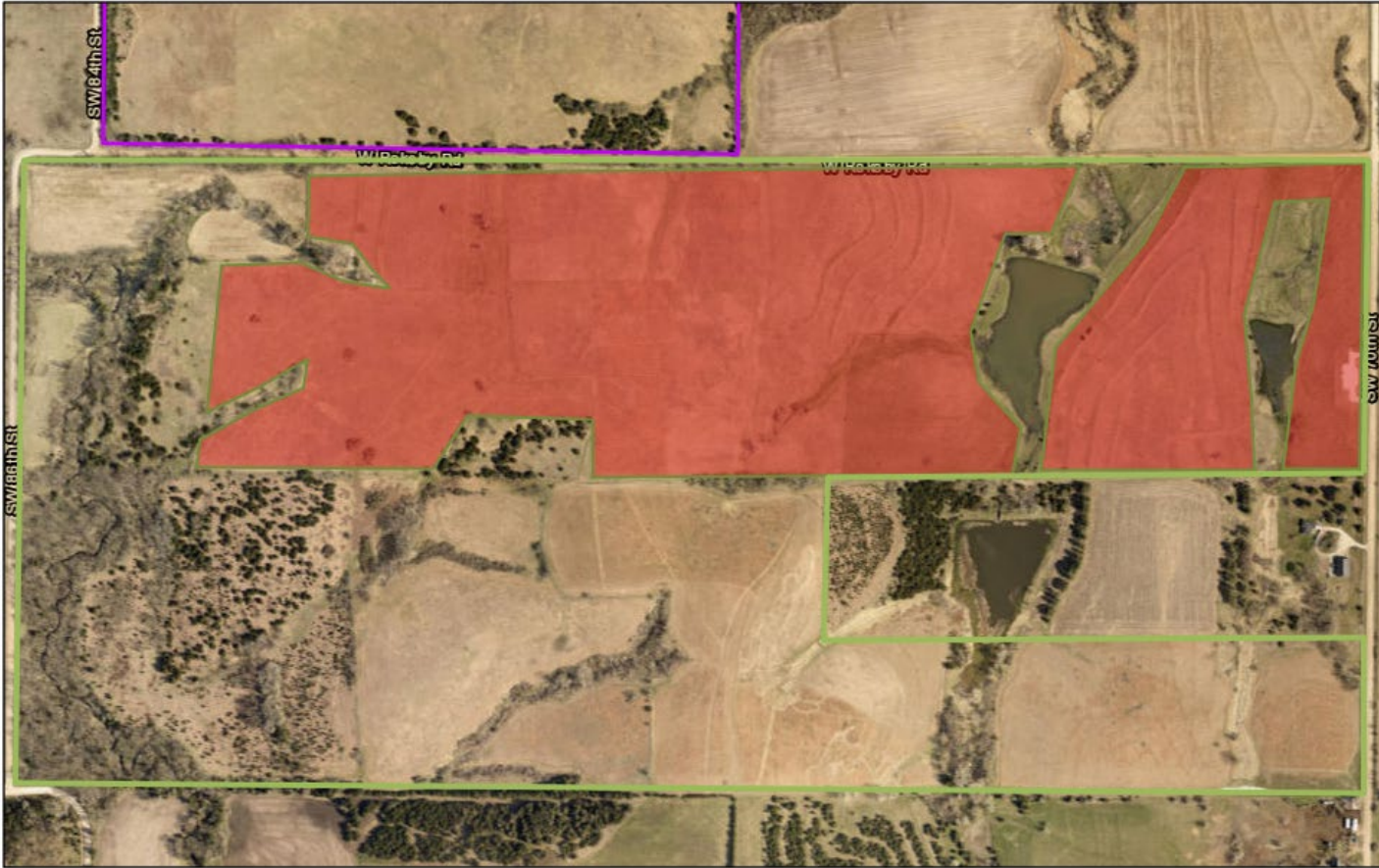
Bid Due Date: Must be received by close of business on January 5, 2022. Please mail or email bids to Will Inselman at the address above. Please call or email if you have any questions. Contractors may also schedule a site visit with me before bidding or may visit the site on their own at any time. The selected contractor may access the site, within the defined period as soon as the project is awarded. Since this is a public area, the contractor will provide one week notification prior to mobilization on site to allow for a public news release.

Deadline for Completion: March 15, 2023



Scientific Name	Common Name	PLS lbs. Total (115 Acres)
<i>Andropogon gerardii</i>	Big Bluestem	11.5
<i>Bouteloua curtipendula</i>	Sideoats Grama	92
<i>Schizachyrium scoparium</i>	Little Bluestem	92
<i>Sporobolus heterolepis</i>	Prairie Dropseed	4.6
<i>Koeleria macrantha</i>	Prairie Junegrass	2.3
<i>Sporobolus compositus</i>	Composite Dropseed	11.5
<i>Elymus canadensis</i>	Canada Wildrye	11.5
<i>Sorghastrum nutans</i>	Indiangrass	11.5
<i>Carex bicknellii</i>	Bicknell's Sedge	2.3
<i>Carex gravida</i>	heavy sedge	2.3
<i>Carex brevior</i>	shortbeak sedge	2.3
Forbs/Legumes		
<i>Asclepias sullivantii</i>	Prairie Milkweed	1.15
<i>Artemisia ludoviciana</i>	White Sagebrush	1.15
<i>Rudbeckia hirta</i>	Black-eyed Susan	4.6
<i>Asclepias tuberosa</i>	Butterfly Milkweed	2.875
<i>Anemone cylindrica</i>	Candle Anemone	0.575
<i>Senna marilandica</i>	Maryland Senna	11.5
<i>Helianthus grosseserratus</i>	Saw-tooth Sunflower	0.575
<i>Silphium laciniatum</i>	Compass Plant	4.6
<i>Silphium perfoliatum</i>	Cup Plant	1.15
<i>Liatris punctata</i>	Dotted Blazing Star	2.875
<i>Symphyotrichum ericoides</i>	White Heath Aster	0.575
<i>Euphorbia corollata</i>	Flowering Spurge	1.15
<i>Penstemon digitalis</i>	Foxglove Penstemon	1.15
<i>Zizia aurea</i>	Golden Alexander's	11.5
<i>Eupatorium altissimum</i>	Tall Thoroughwort	2.3
<i>Verbena stricta</i>	Hoary Vervain	3.45
<i>Penstemon grandiflorus</i>	Large-flowered Beardtongue	11.5
<i>Baptisia bracteata</i>	Longbract Wild Indigo	1.15
<i>Ratibida columnifera</i>	Long-headed Coneflower	2.3
<i>Heliopsis helianthoides</i>	Ox-eye	2.3
<i>Echinacea angustifolia</i>	Blacksamson Echinacea	2.3

<i>Chamaecrista fasciculata</i>	Partridge Pea	11.5
<i>Liatris pycnostachya</i>	Prairie Blazing Star	5.75
<i>Potentilla arguta</i>	Prairie Cinquefoil	1.15
<i>Monarda fistulosa</i>	Wild Bergamot	2.3
<i>Desmanthus illinoensis</i>	Prairie Mimosa	23
<i>Dalea purpurea</i>	Purple Prairie Clover	23
<i>Phlox pilosa</i>	Prairie Phlox	0.92
<i>Oligoneuron rigidum</i>	Stiff Goldenrod	3.45
<i>Astragalus canadensis</i>	Canadian Milkvetch	2.3
<i>Silphium integrifolium</i>	Rosinweed	4.6
<i>Lespedeza capitata</i>	Round-headed Bush Clover	8.05
<i>Solidago speciosa</i>	Showy Goldenrod	1.15
<i>Desmodium canadense</i>	Showy Ticktrefoil	8.05
<i>Liatris aspera</i>	Tall Blazing Star	2.3
<i>Achillea millefolium</i>	Western Yarrow	0.575
<i>Dalea candida</i>	White Prairie Clover	17.25
<i>Baptisia alba</i>	White Wild Indigo	4.6
Woody		
<i>Amorpha canescens</i>	Lead Plant	3.45
<i>Rosa arkansana</i>	Prairie Wild Rose	1.15

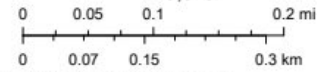
Bobcat Prairie Grassland Restoration



12/19/2022, 11:54:11 AM

-  Conservation Easements
-  LPSNRD Boundary

1:9,028



Esri, HERE, IPC, Lancaster County, NE GIS, Maxar

Web AppBuilder for ArcGIS
Digitized by JEO, March 2019 | Lancaster County, NE GIS, Maxar | Esri, HERE, IPC |

Area in **RED** denotes project site

From: [Diversity Farms](#)
To: [Will Inselman](#)
Subject: RE: Lower Platte South NRD Request for Bid Seed and Seeding
Date: Thursday, December 22, 2022 12:43:08 PM

Caution: This email originated from OUTSIDE the organization. Do not open suspicious links or attachments. Contact IT for assistance.

Will - The bid cost for the proposed Bobcat Prairie seeding project as presented is \$36,464.40. This includes the seed, seeding, travel, and transport. Thank You, Jon Judson, President, Diversity Farms, Inc., 25494 320th St., Dedham, Iowa 51440. Phone 712 830-4143

From: Will Inselman <winselman@lpsnrd.org>
Sent: Monday, December 19, 2022 12:43 PM
To: Diversity Farms <diversityfarms@iowatelecom.net>
Subject: Lower Platte South NRD Request for Bid Seed and Seeding

Hello,

The Lower Platte South Natural Resources District (LPSNRD) invites you to submit bids for a **native grassland seed and seeding at Bobcat Prairie**.

The seed should be local ecotype native seed from the eastern ½ of Nebraska or western ½ of Iowa. The project will also require the bidder to conducting the seeding using a broadcast method. **Please refer to the attached document for more detailed bid specifications.**

Bid Due Date: Must be received by close of business on January 5, 2022. Please mail or email bids to Will Inselman at the address above. Please call or email if you have any questions.

The District reserves the right to reject any or all bids and to waive any informalities in the bidding.

Thank you.
-Will Inselman

Will Inselman
Resources Coordinator
Lower Platte South NRD
3125 Portia Street
PO Box 83581
Lincoln, NE 68501
402-432-5727



1/5/2023

**Prairie Legacy Inc.
1225 County Road U
Western NE 68464**

402-310-8167

Bid for Seeding Bobcat Prairie

The Prairie Legacy Inc. bid is for either broadcasting (Brillion seeder) or a no till drill if you should decide you want to do that instead.

Prairie Legacy will use a subcontractor to apply the seed.

The total cost for either seeding method is \$353.00 per acre including seed using the seeding rates listed below.

Seeding will be done prior to March 15 as the weather conditions allow.

The seed mix includes the following substitutions and includes Oats (5 # per Acre) as a filler if needed.

Substitutions:

We will substitute poppy mallow for candle anemone and Echinacea pallida (pale coneflower) for E. angustifolia (black samson)

Additions and Reductions:

We will add the following species: common milkweed, ground plum, bush's sedge, hairy gayfeather (L. squarrosa), tube penstemon, bracted spiderwort, and purple lovegrass to fill in for partial reductions in the amounts of Sullivant's milkweed, longbract wild indigo, Bicknell's sedge, dotted blazing star, large beardtongue, prairie phlox and prairie dropseed, respectively, keeping the mix at the same number or similar seeds per square foot. Prairie Legacy Inc. reserves the right to adjust the seed mix if the awarding of the project takes longer than one month or if requested by the client.

The origin of this seed is eastern Nebraska, or western Iowa. All seed is tested for purity and germination using AOSA rules and meets all other standards set by Nebraska law. Prairie Legacy will see that the seeding is done properly but will not guarantee germination or future vegetative coverage.

A handwritten signature in black ink, appearing to read "Kay L. Kottas".

Kay L Kottas,
President, Prairie Legacy Inc.

The full mix is as follows

Common Name	Scientific	PLS lbs per acre	% by weight	PLS seeds per sq ft	% of Mixture PLS	total PLS lbs
yarrow	<i>Achillea millefolium</i>	0.005	0.133	0.327	1.28%	0.5750
leadplant NRCS	<i>Amorpha canescens</i>	0.030	0.796	0.134	0.52%	3.4500
big bluestem	<i>Andropogon gerardii</i>	0.100	2.654	0.331	1.29%	11.5000
cudweed sagewort sage	<i>Artemisia ludoviciana</i>	0.010	0.265	0.929	3.62%	1.1500
Sullivant's milkweed	<i>Asclepias sullivantii</i>	0.002	0.053	0.003	0.01%	0.2300
common milkweed	<i>Asclepias syriaca</i>	0.008	0.212	0.015	0.06%	0.9200
butterfly milkweed	<i>Asclepias tuberosa</i>	0.025	0.663	0.040	0.16%	2.8750
Canada milk-vetch	<i>Astragalus canadensis</i>	0.020	0.531	0.124	0.48%	2.3000
ground-plum	<i>Astragalus crassicaarpus</i>	0.005	0.133	0.010	0.04%	0.5750
white wild indigo	<i>Baptisia alba</i>	0.040	1.061	0.025	0.10%	4.6000
plains wild indigo	<i>Baptisia leucophaea (B. bracteata)</i>	0.005	0.133	0.003	0.01%	0.5750
sideoats grama	<i>Bouteloua curtipendula</i>	0.800	21.230	1.763	6.87%	92.0000
purple poppymallow	<i>Callirhoe involucrata</i>	0.010	0.265	0.008	0.03%	1.1500
Bicknell's sedge	<i>Carex bicknellii</i>	0.010	0.265	0.062	0.24%	1.1500
short-beak sedge	<i>Carex brevior</i>	0.024	0.637	0.357	1.39%	2.7600
Bush's sedge	<i>Carex bushii</i>	0.002	0.053	0.007	0.03%	0.2300
heavy-fruit sedge	<i>Carex gravida</i>	0.020	0.531	0.088	0.34%	2.3000
showy partridge-pea	<i>Chamaecrista fasciculata</i>	0.100	2.654	0.149	0.58%	11.5000
easter white prairie-clover	<i>Dalea candida</i>	0.150	3.981	1.322	5.15%	17.2500
purple prairie-clover	<i>Dalea purpurea</i>	0.200	5.307	1.455	5.67%	23.0000
Illinois bundleflower	<i>Desmanthus illinoensis</i>	0.200	5.307	0.390	1.52%	23.0000
Canada tick-clover	<i>Desmodium canadense</i>	0.070	1.858	0.135	0.53%	8.0500
tall cinquefoil	<i>Drymocallis arguta</i>	0.010	0.265	0.847	3.30%	1.1500
pale purple coneflower	<i>Echinacea pallida</i>	0.020	0.531	0.049	0.19%	2.3000
Canada wild-rye	<i>Elymus canadensis</i>	0.100	2.654	0.262	1.02%	11.5000
purple lovegrass	<i>Eragrostis spectabilis 1905</i>	0.001	0.027	0.103	0.40%	0.1150
tall boneset	<i>Eupatorium altissimum</i>	0.020	0.531	0.367	1.43%	2.3000
flowering spurge	<i>Euphorbia corollata</i>	0.010	0.265	0.002	0.01%	1.1500
sawtooth sunflower	<i>Helianthus grosseserratus</i>	0.005	0.133	0.072	0.28%	0.5750
False sunflower	<i>Heliopsis helianthoides</i>	0.020	0.531	0.046	0.18%	2.3000
Junegrass	<i>Koeleria macrantha</i>	0.020	0.531	1.063	4.14%	2.3000
round-head bush-clover	<i>Lespedeza capitata</i>	0.070	1.858	0.280	1.09%	8.0500
rough gayfeather	<i>Liatris aspera</i>	0.021	0.557	0.132	0.52%	2.4150
plains gayfeather	<i>Liatris glabrata (L. squarrosa)</i>	0.005	0.133	0.013	0.05%	0.5750
dotted gayfeather	<i>Liatris punctata</i>	0.013	0.345	0.033	0.13%	1.4950
thick-spike gayfeather	<i>Liatris pycnostachya</i>	0.050	1.327	0.138	0.54%	5.7500
wild-bergamot	<i>Monarda fistulosa</i>	0.020	0.531	0.584	2.28%	2.3000
evening primrose	<i>Oenothera biennis</i>	0.002	0.053	0.063	0.25%	0.2300

beardtongue	<i>Penstemon digitalis</i>	0.010	0.265	0.478	1.86%	1.1500
shell-leaf penstemon	<i>Penstemon grandiflorus</i>	0.050	1.33	0.240	0.95%	5.7500
tube penstemon	<i>Penstemon tubaefflorus</i> var. <i>tubaefflorus</i>	0.007	0.172	0.191	0.74%	0.7475
prairie phlox	<i>Phlox pilosa</i>	0.001	0.021	0.006	0.02%	0.0920
upright prairie-coneflower	<i>Ratibida columnifera</i>	0.020	0.531	0.338	1.32%	2.3000
wild prairie rose	<i>Rosa arkansana</i>	0.010	0.265	0.009	0.04%	1.1500
black-eyed Susan	<i>Rudbeckia hirta</i>	0.040	1.061	1.447	5.64%	4.6000
little bluestem	<i>Schizachyrium scoparium</i>	0.800	21.230	4.420	17.22%	92.0000
Maryland Senna	<i>Senna marilandica</i>	0.100	2.654	0.062	0.24%	11.5000
rosinweed	<i>Silphium integrifolium</i>	0.040	1.061	0.032	0.12%	4.6000
compassplant	<i>Silphium laciniatum</i>	0.040	1.061	0.010	0.04%	4.6000
cup-plant	<i>Silphium perfoliatum</i>	0.010	0.265	0.015	0.06%	1.1500
Stiff goldenrod	<i>Solidago rigida</i>	0.030	0.796	0.464	1.81%	3.4500
showy-wand goldenrod	<i>Solidago speciosa</i>	0.010	0.265	0.983	3.83%	1.1500
Indiangrass	<i>Sorghastrum nutans</i>	0.100	2.654	0.401	1.56%	11.5000
tall dropseed	<i>Sporobolus compositus</i>	0.100	2.654	3.444	13.42%	11.5000
prairie dropseed	<i>Sporobolus heterolepis</i>	0.020	0.531	0.118	0.46%	2.3000
heath aster	<i>Symphyotrichum ericoides</i>	0.005	0.133	0.367	1.43%	0.5750
western spiderwort	<i>Tradescantia bracteata</i>	0.013	0.345	0.048	0.19%	1.4950
hoary vervain	<i>Verbena stricta</i>	0.030	0.796	0.404	1.57%	3.4500
golden alexander	<i>Zizia aurea</i>	0.100	2.654	0.404	1.57%	11.5000
Grasses Total:		2.097	55.797	12.419	48.48%	
Wildflower/Forb/Legume Total:		1.661	44.203	13.199	51.52%	
Total Mixture:		3.758	100.00	25.666	100.00%	432.2045

From: [Mike Bullerman](#)
To: [Will Inselman](#)
Cc: [Amy Jones](#); [Mike Bullerman](#)
Subject: Re: Lower Platte South NRD Request for Bid Seed and Seeding
Date: Tuesday, January 3, 2023 9:55:21 AM

Caution: This email originated from OUTSIDE the organization. Do not open suspicious links or attachments. Contact IT for assistance.

Will,

PPRI bids this project at \$600/acre, for a total of \$69,000.

HDLE Seed Mix: \$450/ac x 115 ac = \$51,750.00

Broadcast Seeding Service: \$50/ac x 115 ac = \$5,750.00

Cultipacking Service: \$100/ac x 115 ac = \$11,500.00

Thank you,

Mike Bullerman
Restoration Ecologist & GIS Specialist
Prairie Plains Resource Institute
1307 L St.
Aurora, NE 68818

402-694-9847 mobile

402-694-5535 office



<!--[if !vml]--><!--[endif]-->

www.prairieplains.org

On 12/19/2022 12:45 PM, Will Inselman wrote:

Hello,

The Lower Platte South Natural Resources District (LPSNRD) invites you to submit bids for a **native grassland seed and seeding at Bobcat Prairie**.

The seed should be local ecotype native seed from the eastern ½ of Nebraska or western ½ of Iowa. The project will also require the bidder to conducting the seeding using a broadcast method. **Please refer to the attached document for more detailed bid specifications.**

Bid Due Date: Must be received by close of business on January 5, 2022. Please mail or email bids to Will Inselman at the address above. Please call or email if you have any questions.

The District reserves the right to reject any or all bids and to waive any informalities in the bidding.

Thank you.
-Will Inselman

Will Inselman
Resources Coordinator
Lower Platte South NRD
3125 Portia Street
PO Box 83581
Lincoln, NE 68501
402-432-5727