

# BUY A TRAIL PASS, GET BETTER TRAILS

Your voluntary trail pass donation is used exclusively to maintain existing trails. Passes are available at boxes along the trails, or by contacting the NRD.

We hope you enjoy using the trails as much as we enjoy providing them.

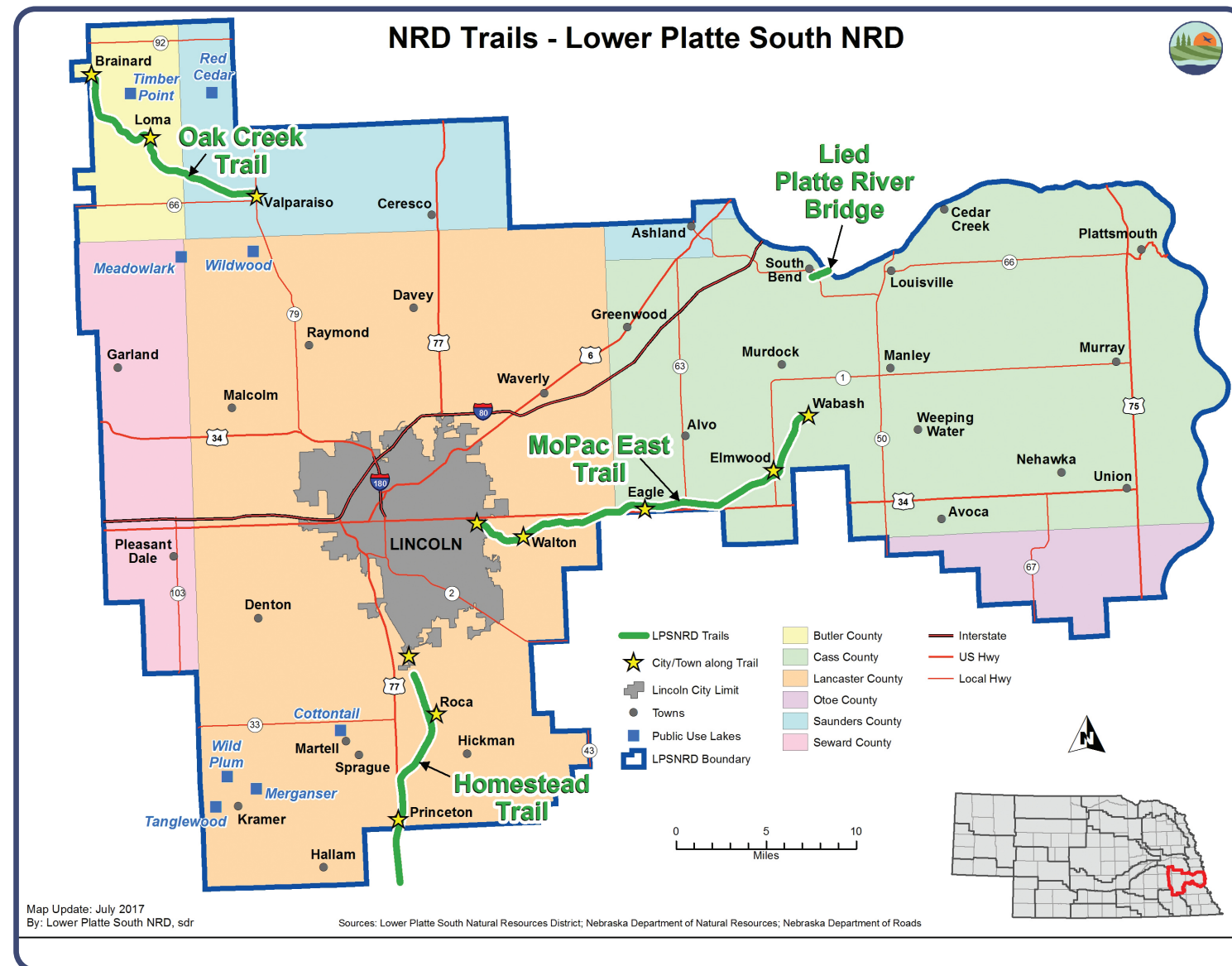
Trail rules and regulations are posted at trailheads. The Lower Platte South NRD is committed to doing all we can to assure your trail experience is a safe and pleasant one. Please follow our Rules and Regulations as a courtesy to fellow trail users and report any misuse of trails to law enforcement or the Lower Platte South NRD.



OAK CREEK TRAIL



Detailed Rules and Regulations can be found at [www.lpsnrd.org](http://www.lpsnrd.org) > Recreation > Trails



## ABOUT THE NRD

The Lower Platte South Natural Resources District is one of 23 districts in the state of Nebraska. Formed in 1972 for the purpose of managing the state's natural resources, with an emphasis on watershed management. Programs and activities include all areas of natural resource management and development: tree planting, flood protection, wildlife habitat, stream bank stabilization, environmental education, land treatment, water monitoring and many others. The districts are partially funded by property taxes and governed by a board of directors—elected representatives who serve four-year terms. The NRD system is local government working to protect local natural resources. The Lower Platte South NRD includes nearly all of Lancaster and Cass counties and parts of Seward, Saunders, Otoe, and Butler counties.

# NRD TRAILS



LOWER PLATTE SOUTH  
natural resources district



LOWER PLATTE SOUTH  
natural resources district

Lower Platte South NRD • 3125 Portia Street  
PO Box 83581 • Lincoln, Nebraska 68501-3581  
Phone: (402) 476-2729 • Fax: (402) 476-6454

Contact: Ariana Kennedy, Resources Conservationist  
The Lower Platte South NRD is an  
Equal Opportunity Provider and Employer



[www.lpsnrd.org](http://www.lpsnrd.org)

# MOPAC EAST RECREATIONAL TRAIL

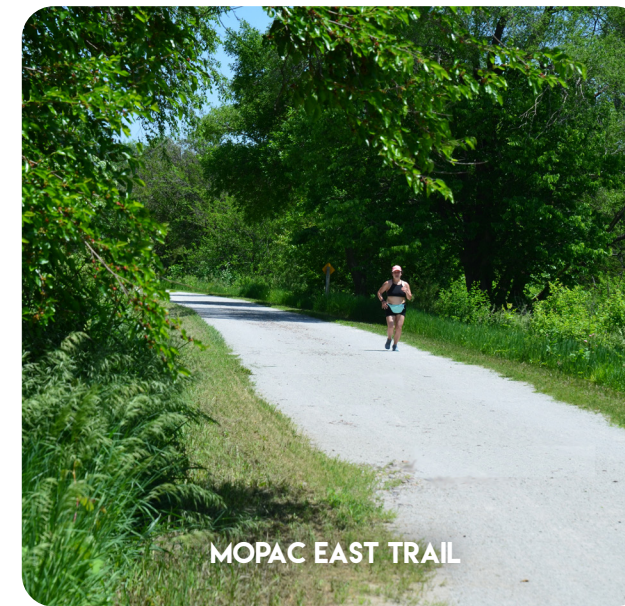
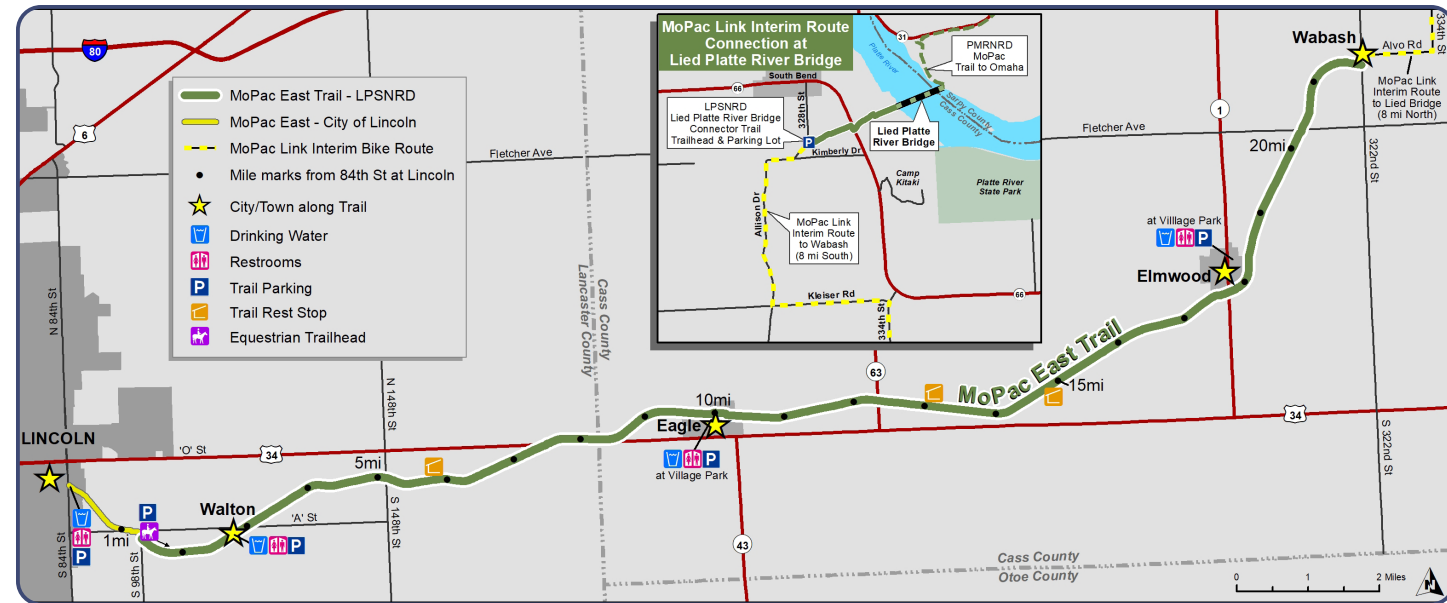
(AND CHARLES L. WARNER EQUESTRIAN TRAIL)

## About MoPac East Trail

The MoPac East Trail is a 23-mile crushed limestone recreational trail through some of southeast Nebraska's wildlife habitat. It offers year-round recreation for hikers, joggers, bicyclists, horseback riders, cross country skiers, snowshoeing and wildlife viewing. Water and other services are available in all of the communities! There is an NRD installed drinking fountain at the Trailhead in Walton equipped with a water bottle fill station and a pet bowl for your four-legged friends.

## Where is the MoPac East Trail?

The NRD's MoPac East Trail connects to the MoPac Trail in Lincoln, linking it to the more than 130-mile city trail network. The Charles L. Warner Equestrian Trail begins at 98th and "A" streets in Lincoln and will also take users all the way to Wabash. It features a natural surface and is a perfect choice for an outing with your best four-legged friend.



MOPAC EAST TRAIL



OAK CREEK TRAIL

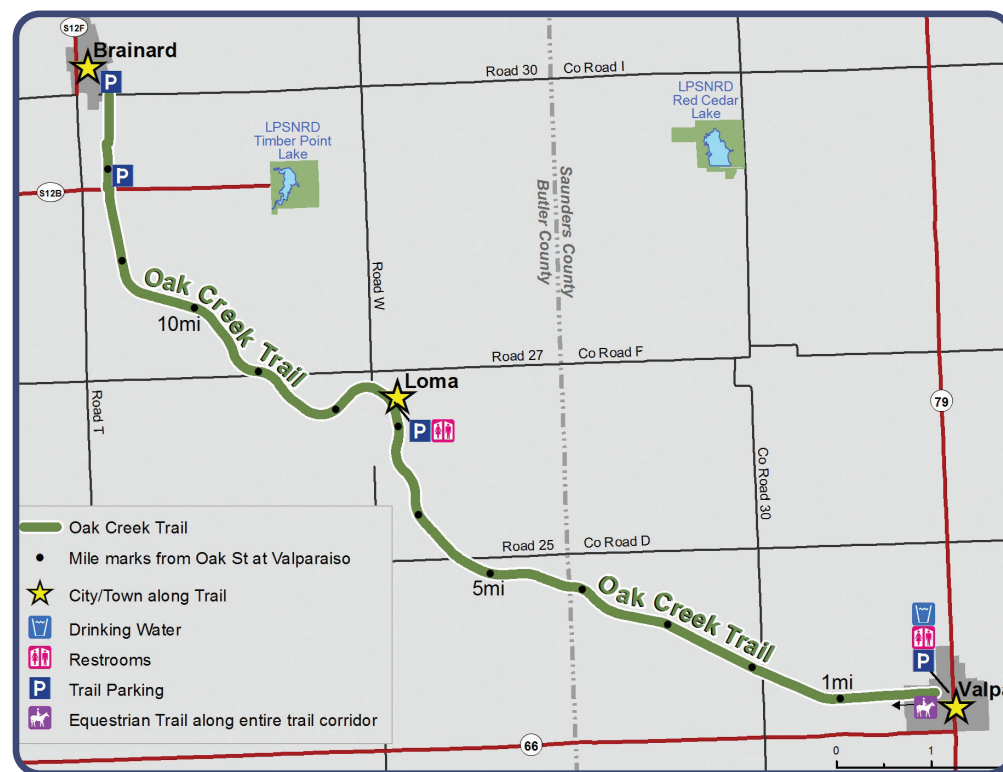
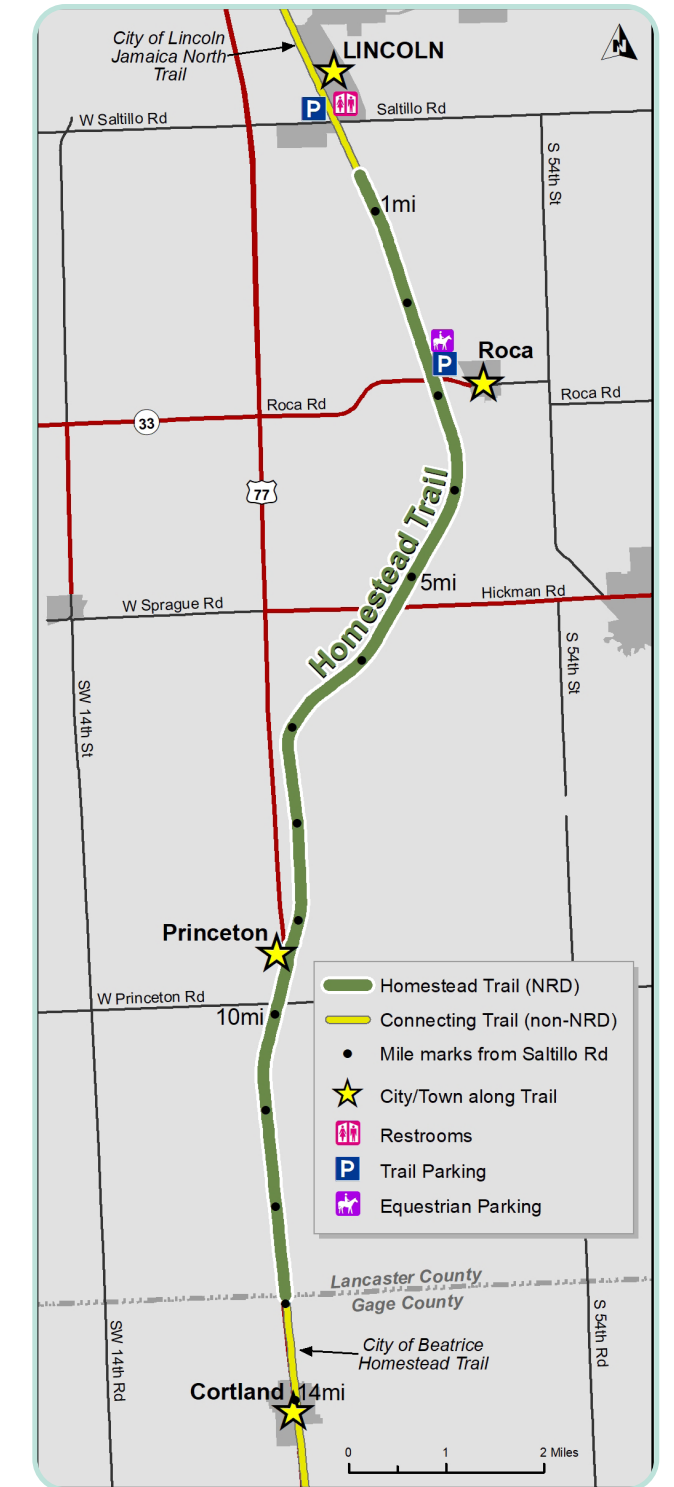


HOMESTEAD TRAIL

# HOMESTEAD TRAIL

## Trail History

The Homestead Trail portion owned by the NRD follows a former Union Pacific Railroad line from 25th and Saltillo Road, in Lincoln, to Cortland; a distance of about 13-miles. The trail continues through Beatrice to Marysville, Kansas. It is attached at the north end to the City of Lincoln's Jamaica North Trail and Wilderness Park. Trail Parking is available at Saltillo Road and Roca. This trail is shared with equestrian users, who will find ample room for trailers at the Roca parking lot. Homestead is a great excuse to get outdoors.



# OAK CREEK TRAIL

## About Oak Creek

Stretches of natural prairie, majestic oak woodlands and breathtaking highland vistas make the 12-mile Oak Creek Trail, from Valparaiso to Brainard, one of Nebraska's most versatile recreational trails. The Oak Creek Recreational Trail shares its corridor with a separate equestrian trail.