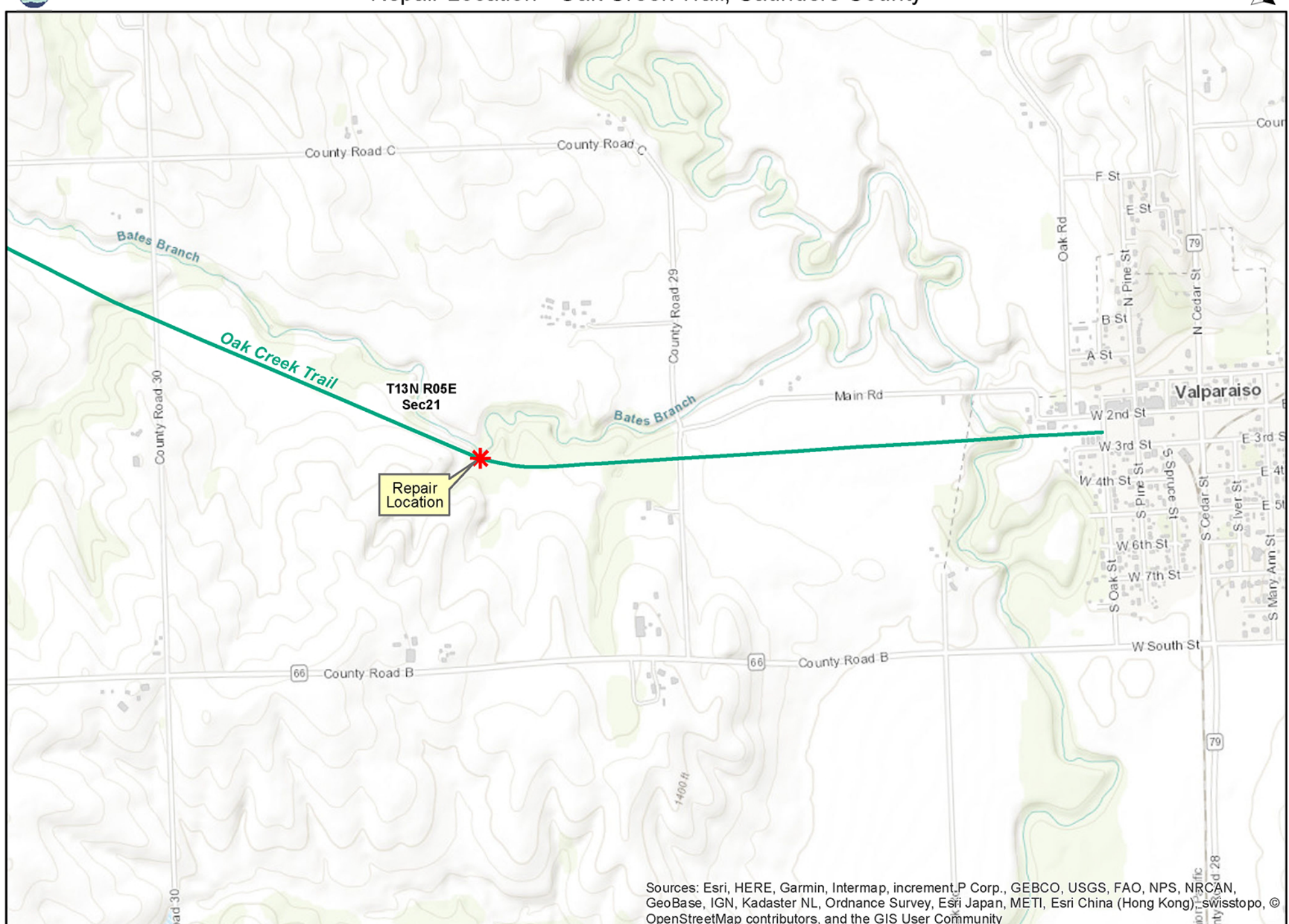
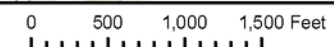




# Repair Location - Oak Creek Trail, Saunders County



Sources: Esri, HERE, Garmin, Intermap, increment,P Corp., GEBCO, USGS, FAO, NPS, NRCAN, GeoBase, IGN, Kadaster NL, Ordnance Survey, Esri Japan, METI, Esri China (Hong Kong), swisstopo, OpenStreetMap contributors, and the GIS User Community





# Repair Location - Oak Creek Trail, Saunders County



PID: 000023500  
VEACH, JOYCE EILEEN

PID: 000026500  
MARTIN, LARRY G & SHIRLEY W

PID: 000026500  
MARTIN, LARRY G & SHIRLEY W

