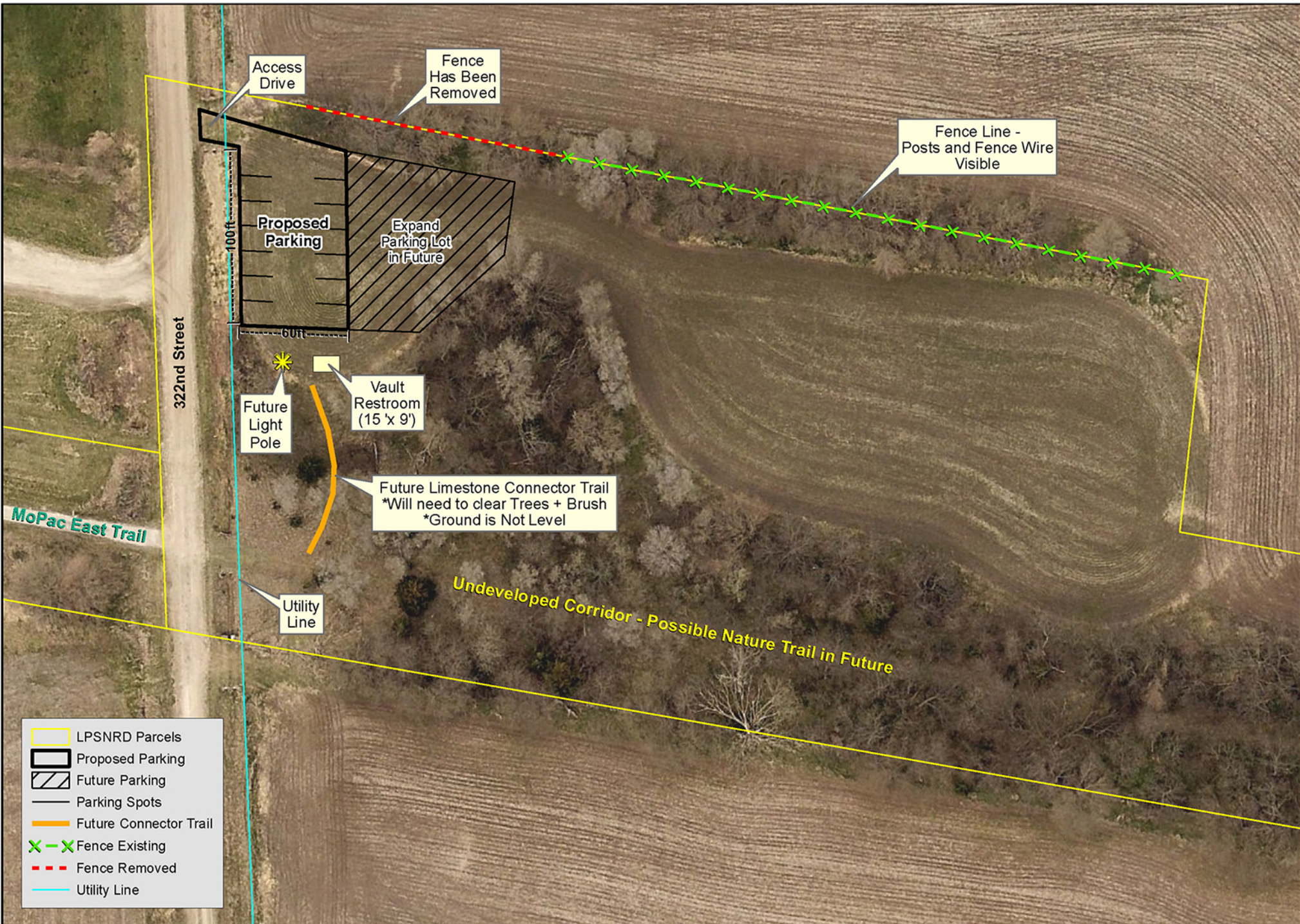


# Wabash Trailhead Layout, Cass County



Access Drive

Fence Has Been Removed

Fence Line - Posts and Fence Wire Visible

Proposed Parking

Expand Parking Lot in Future

322nd Street

100ft

60ft

Future Light Pole

Vault Restroom (15' x 9')

Future Limestone Connector Trail  
\*Will need to clear Trees + Brush  
\*Ground is Not Level

Utility Line

Undeveloped Corridor - Possible Nature Trail in Future

- LPSNRD Parcels
- Proposed Parking
- Future Parking
- Parking Spots
- Future Connector Trail
- Fence Existing
- Fence Removed
- Utility Line