

# EMPLOYEE DIRECTORY

&

## ORGANIZATIONAL STRUCTURE

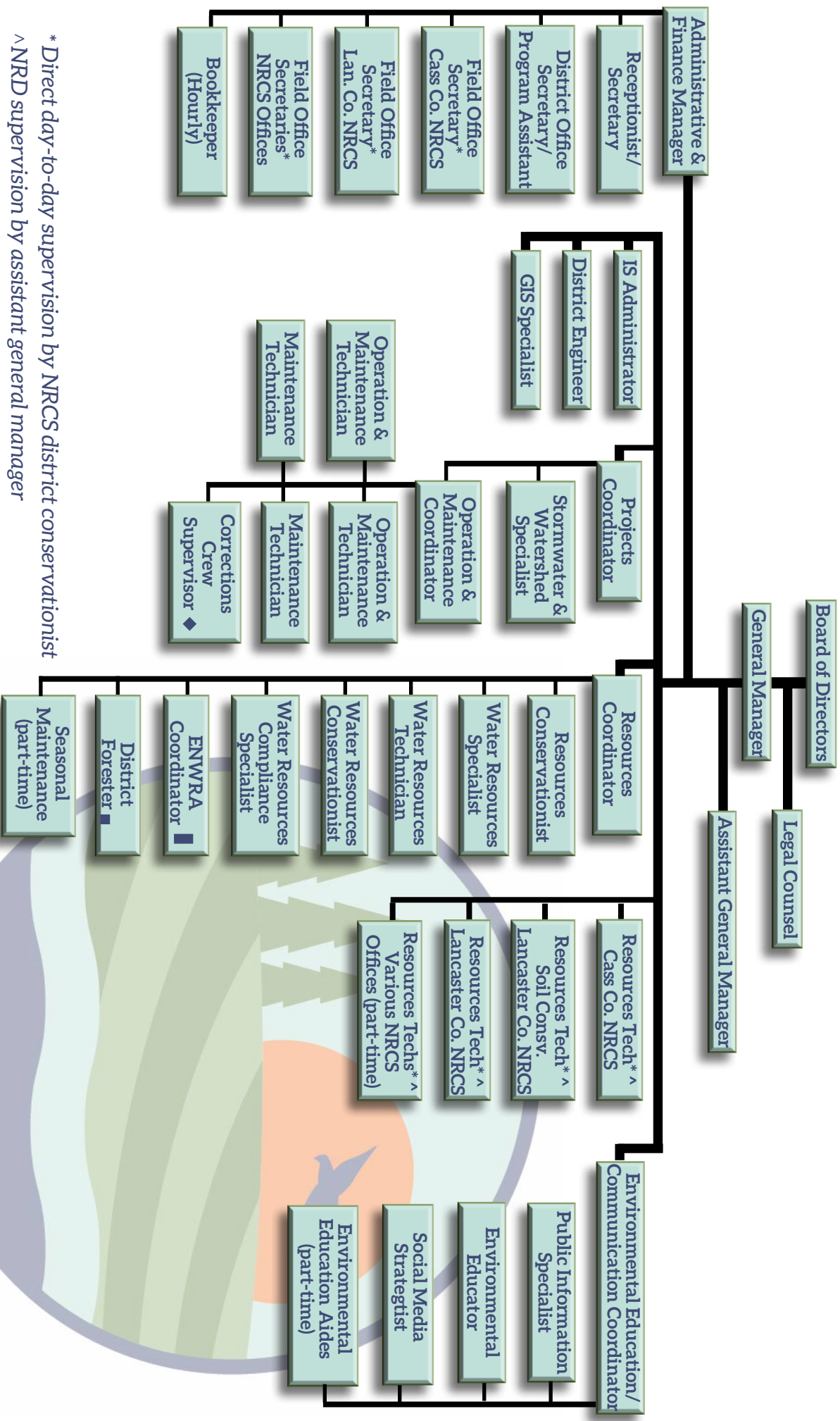


# LOWER PLATTE SOUTH

## natural resources district

Updated August 2021

# ORGANIZATIONAL STRUCTURE OF THE LOWER PLATTE SOUTH NRD



\* Direct day-to-day supervision by NRCS district conservationist

^ NRD supervision by assistant general manager

■ Administration and supervision by Nebraska Forest Service

■ Administration and supervision by UNL Conservation and Survey Division

◆ Contract with Nebraska Department of Corrections for two crews and two crew supervisors

# LPSNRD STAFF

## PAUL ZILLIG

### General Manager

Manage district operations and supervise all district employees  
Provide guidance and assistance to Board of Directors  
Coordinate programs with government and private agencies  
Coordinate project development with staff  
Employed at LPSNRD since 1979



## DAVID POTTER

### Assistant General Manager

Assist general manager in District Operations  
Coordinate conservation cost-share programs  
Administer Watershed Structure Rehabilitation Program  
Employed at LPSNRD since 2016



## JOHN ALBERT

### Resources Technician (Lancaster County NRCS Office)

Conservation practices survey, design and layout  
Conservation cost-share applications, payment claims and conservation plans  
Contact for NRD programs/inquiries  
Employed at LPSNRD since 1990



## MCKENZIE BARRY

### Environmental Education/ Communication Coordinator

Facilitate and coordinate NRD Environmental Education programs  
Manage all district social media  
Coordinate NRD nitrogen certification and ground water allocation trainings  
Earth Wellness Festival coordinator  
Employed at LPSNRD since 2001



# LPSNRD STAFF

## KRISTIN BUNTEMEYER

### Administrative Assistant

Payroll  
Accounting of district finances  
Wellness Program coordinator  
Supervise clerical staff  
Employed at LPSNRD since 2021



## CONNIE DAMROW

### Bookkeeper

Accounts payable  
Assist with District finances  
Grants management  
Alliance financial support  
Employed at LPSNRD since 2009



## DICK EHRMAN

### Water Resources Specialist

Develop and manage ground and surface water monitoring programs  
Coordinate ground water/geologic data gathering for district  
Assist with implementation of Ground Water Management Plan  
Assist with ground water programs  
Employed at LPSNRD since 2009



## CONNIE HANSEN

### Field Office Secretary (Lancaster Co. NRCS Office)

Contact for NRD programs/inquiries  
Conservation cost-share applications/claims  
General office duties  
Employed at LPSNRD since 1990



# LPSNRD STAFF

## KATHY HAUSCHILD

### Receptionist/Secretary

Office receptionist  
Coordinate office and staff schedules and NRD meetings & rooms  
General office duties and secretarial support  
Employed at LPSNRD since 2017



## TRENT HENRY

### Maintenance Technician

Prairie Corridor on Hannes Branch operation and maintenance  
Manage LPSNRD Weed program  
Assist with woody vegetation management on wildlife management areas  
Employed at LPSNRD since 2020



## STEVE HERDZINA

### Water Resources Compliance Specialist

Implements compliance guidelines for Ground Water Rules and Regulations  
Manages certified irrigated acres  
Administers water meter cost-share program  
Oversees 319 Water Quality management Plan  
Employed at LPSNRD since 2008



## HANNAH HERZFELD

### Resources Technician (Cass County NRCS Office)

Conservation practices survey, design and layout  
Conservation cost-share applications, payment claims and conservation plans  
Contact for NRD programs/inquiries  
Employed at LPSNRD since 2021



# LPSNRD STAFF

## BRYCE JENSEN

### Operation/Maintenance Technician

Urban channel inspection and maintenance, including Antelope Valley  
Coordinate hiker/biker trail maintenance  
NRD building maintenance  
Vehicle purchase and maintenance  
Employed at LPSNRD since 2014



## ARIANA KENNEDY

### Resources Conservationist

Trail development, inspections and management  
Manage and inspect buffer strip and filter strip program  
Assist with NRD lakes and wetlands  
Conduct conservation easement inspections  
Employed at LPSNRD since 1998



## NATHAN KUHLMAN

### Information Systems Administrator

Design, implement and operate information systems architecture  
Analyze information and technology needs  
Ensure computer networks are operational, backed up and secure  
Employed at LPSNRD since 2010



## JAN KUSH

### Field Office Secretary (Cass County NRCS Office)

Contact for NRD programs/inquiries  
Conservation cost-share applications/claims  
General office duties  
Employed at LPSNRD since 2020



# LPSNRD STAFF

## AL LANGDALE

### Operation and Maintenance Coordinator

Coordinate operation and maintenance staff  
Salt Creek Levee project inspections, operation and maintenance  
Salt Creek project (non-levee) operation and maintenance  
As-built project construction plan organization and archives  
Employed at LPSNRD since 1986



## MIKE MASCOE

### Public Information Specialist

Produce all informational materials and NRD newsletter  
Coordinate media and promotional activities  
Responsible for web design and content  
Coordinate special events  
Employed at LPSNRD since 1998



## CRAIG MATULKA

### Operation/Maintenance Technician

Manage Weed Control Program  
Perform general operation and maintenance duties  
Conduct dam safety inspections  
Maintain NRD dam database  
Employed at LPSNRD since 2004



## MIKE MURREN

### Projects Coordinator

Assist with planning, design, landrights, contract preparation, construction and maintenance of district projects  
Supervise Stormwater Floodplain Specialist and operation and maintenance staff  
Develop and promote urban stormwater programs  
Coordinate construction of flood control dams, channel restorations and flood reduction projects  
Employed at LPSNRD since 2019



# LPSNRD STAFF

## JARED NELSON

### District Engineer

Coordinate Deadmans Run Section 205 Flood Reduction Study  
Provide engineering support for NRD projects  
Coordinate Salt Creek Levee project improvements  
Evaluate operation of NRD projects  
Employed at LPSNRD since 2018



## DREW RATKOVEC

### Maintenance Technician

Maintenance on NRD projects and properties  
Manage Weed Control Program  
Operate and maintain NRD equipment  
Platte River ice monitoring  
Employed at LPSNRD since 2019



## DONNA REID

### District Office Secretary/Program Assistant

Filing systems and maintaining electronic data storage  
Administer NSWCP conservation cost-share programs  
Purchase supplies and equipment for office  
Provide secretarial support  
Employed at LPSNRD since 1994



## SHAULA ROSS

### GIS Specialist

Build and maintain GIS data and projects  
Gather, analyze and integrate spatial information from various sources  
Design and create maps  
Troubleshoot GIS issues  
Employed at LPSNRD since 2004





# LPSNRD STAFF

## DAN SCHULZ

### Resources Coordinator

Coordinate implementation of Ground Water Management Plan  
Liason for Saline Wetland Conservation Partnership, NE Forest Service, NE Land Trust and Prairie Corridor on Haines Branch  
Coordinate and manage public access properties  
Supervise various staff and temporary employees  
Employed at LPSNRD since 1982



## MACLANE SCOTT

### Water Resources Technician

Ground water monitoring, sampling and water levels  
Well permits  
Chemigation permits  
Well decommissioning cost-share  
Employed at LPSNRD since 2019



## EVAN SISEL

### Resources Technician (Lancaster County NRCS Office)

Conservation practices survey, design and layout  
Conservation cost-share applications, payments and plans  
Contact for NRD programs/inquiries  
Employed at LPSNRD since 2018



## VACANCY

### Social Media Assistant

Promote programs, projects and events on social media  
Track impact of LPSNRD social media  
Program and project video production  
Staff podcast production

# LPSNRD STAFF

## ADAM SUTTON

### Environmental Educator

Assist in education presentations, programs and field trips  
Assist with Family nature Nights and afterschool clubs  
Coordinate Test Your Well Nights  
Employed at LPSNRD since 2010



## CHRIS WITTHUHN

### Water Resources Conservationist

Develop and implement ground water monitoring activities  
Manage ground water database and reports  
Ground water best management practices cost-share programs  
Employed at LPSNRD since 2008



## TRACY ZAYAC

### Stormwater/Watershed Specialist

Provide technical assistance for stormwater and floodplain management and erosion and sediment control  
Coordinate Urban Water Quality Program  
Coordinate NRD Community Assistance Program  
NRD/City of Lincoln project liaison  
Employed at LPSNRD since 2019



# JOINT PARTNERSHIP EMPLOYEES

## KATIE CAMERON

### Eastern Nebraska Water Resources Assessment

Plan, manage and administer the Eastern NE Water Resources Assessment (ENWRA)

Perform and coordinate technical duties

Provide hydro geologic consultation

Employed at LPSNRD since 2013



## VACANCY

### Corrections Crew Supervisor

Employed by the Nebraska Department of Corrections

## SAM GROVE

### Corrections Crew Supervisor

Employed by the Nebraska Department of Corrections

Employed at LPSNRD since 2017



## TOM MALMSTROM

### Saline Wetlands Conservation Partnership

Coordinates shared interests between partnership entities

Employed at LPSNRD since 2003



# JOINT PARTNERSHIP EMPLOYEES

## JAY SEATON

### NRD Forester

Oversee NRD conservation tree seedling program  
Coordinate Community Forestry grant program  
Provide technical forestry and tree planting assistance to public  
Provide tree planting designs and plans to interested public  
Employed at LPSNRD since 2012



# 2021 SUMMER STAFF

## ALEX LAUTENSCHLAGER



UNL Sophomore

Majoring in Fisheries & Wildlife  
Minoring in Criminal Justice

## ASHTON TROYER



UNL Junior

Majoring in Fisheries & Wildlife

## CARIN "SUNNY" MELLICK



UNL Junior

Majoring in Fisheries & Wildlife

## ELIJAH STROM



UNL Junior

Majoring in Fisheries & Wildlife

## PAUL STOFFERAHN



UNL Senior

Majoring in Fisheries & Wildlife

## TROY LUGN



UNL Senior

Majoring in Fisheries & Wildlife