

EMPLOYEE DIRECTORY

&

ORGANIZATIONAL STRUCTURE

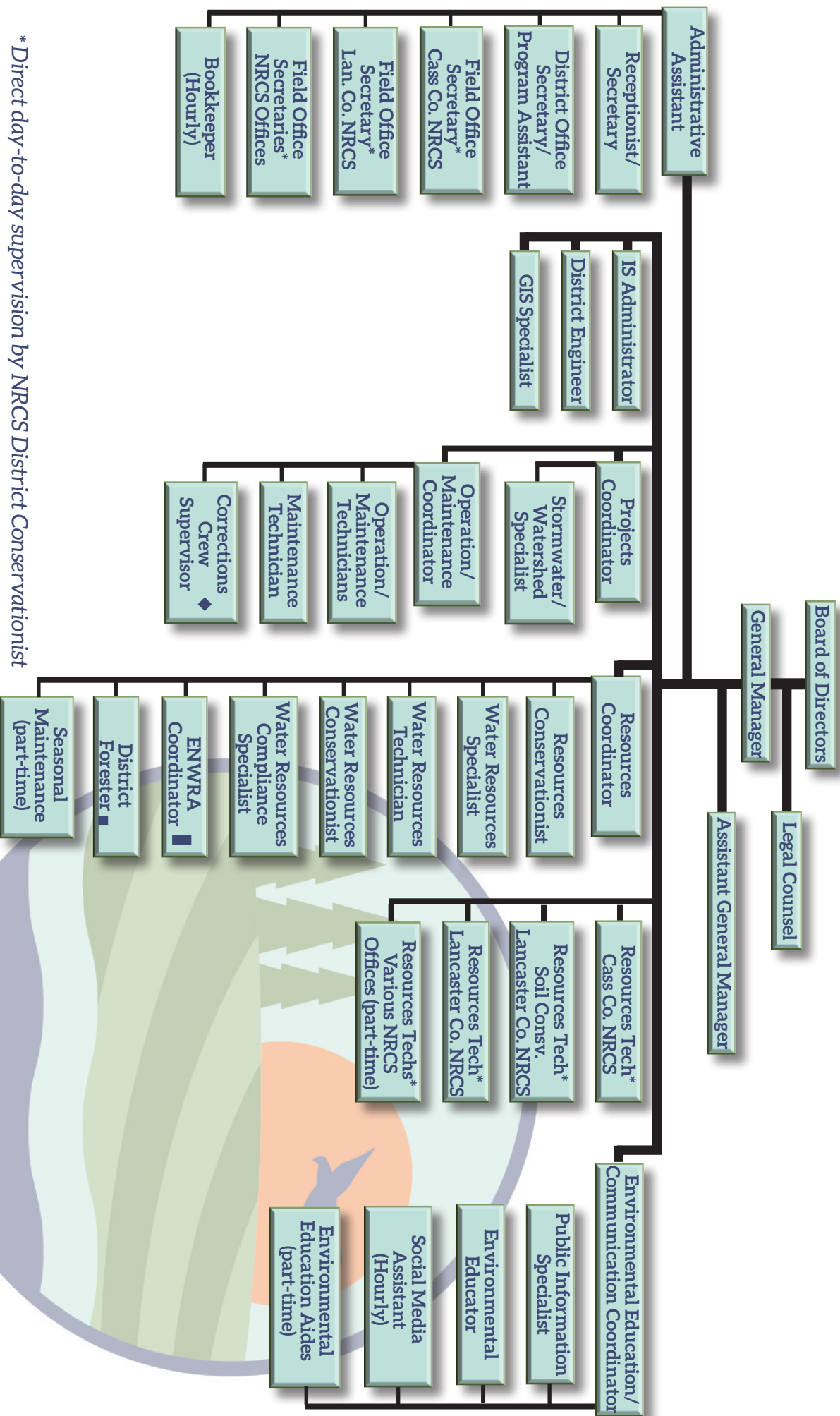


LOWER PLATTE SOUTH

natural resources district

Updated January 2020

ORGANIZATIONAL STRUCTURE OF THE LOWER PLATTE SOUTH NRD



* Direct day-to-day supervision by NRCS District Conservationist

■ Administration and supervision by Nebraska Forest Service

■ Administration and supervision by UNL Conservation and Survey Division

◆ Contract with Nebraska Department of Corrections for two crews and two crew supervisors

LPSNRD STAFF

PAUL ZILLIG

General Manager

Manage district operations and supervise all district employees
Provide guidance and assistance to Board of Directors
Coordinate programs with government and private agencies
Coordinate project development with staff
Employed at LPSNRD since 1979



DAVID POTTER

Assistant General Manager

Assist general manager in District Operations
Coordinate conservation cost-share programs
Administer Watershed Structure Rehabilitation Program
Employed at LPSNRD since 2016



JOHN ALBERT

Resources Technician (Lancaster County NRCS Office)

Conservation practices survey, design and layout
Conservation cost-share applications, payment claims and conservation plans
Contact for NRD programs/inquiries
Employed at LPSNRD since 1990



MCKENZIE BARRY

Environmental Education/ Communication Coordinator

Facilitate and coordinate NRD Environmental Education programs
Manage all district social media
Coordinate NRD nitrogen certification and ground water allocation trainings
Earth Wellness Festival coordinator
Employed at LPSNRD since 2001



LPSNRD STAFF

MICHELLE BLIEMEISTER

Social Media Assistant

Promote programs, projects and events on social media
Track impact of LPSNRD social media
Program and project video production
Staff podcast production
Employed at LPSNRD since 2020



CONNIE DAMROW

Bookkeeper

Accounts payable
Assist with District finances
Grants management
Alliance financial support
Employed at LPSNRD since 2009



DICK EHRMAN

Water Resources Specialist

Develop and manage ground and surface water monitoring programs
Coordinate ground water/geologic data gathering for district
Assist with implementation of Ground Water Management Plan
Assist with ground water programs
Employed at LPSNRD since 2009



CONNIE HANSEN

Field Office Secretary (Lancaster Co. NRCS Office)

Contact for NRD programs/inquiries
Conservation cost-share applications/claims
General office duties
Employed at LPSNRD since 1990



LPSNRD STAFF

KATHY HAUSCHILD

Receptionist/Secretary

Office receptionist

Coordinate office and staff schedules and NRD meetings & rooms

General office duties and secretarial support

Employed at LPSNRD since 2017



STEVE HERDZINA

Water Resources Compliance Specialist

Implements compliance guidelines for Ground Water Rules and Regulations

Manages certified irrigated acres

Administers water meter cost-share program

Oversees 319 Water Quality management Plan

Employed at LPSNRD since 2008



BRYCE JENSEN

Operation/Maintenance Technician

Urban channel inspection and maintenance, including Antelope Valley

Coordinate hiker/biker trail maintenance

NRD building maintenance

Vehicle purchase and maintenance

Employed at LPSNRD since 2014



ARIANA KENNEDY

Resources Conservationist

Trail development, inspections and management

Manage and inspect buffer strip and filter strip program

Assist with NRD lakes and wetlands

Conduct conservation easement inspections

Employed at LPSNRD since 1998



LPSNRD STAFF

NATHAN KUHLMAN

Information Systems Administrator

Design, implement and operate information systems architecture
Analyze information and technology needs
Ensure computer networks are operational, backed up and secure
Employed at LPSNRD since 2010



AL LANGDALE

Operation and Maintenance Coordinator

Coordinate operation and maintenance staff
Salt Creek Levee project inspections, operation and maintenance
Salt Creek project (non-levee) operation and maintenance
As-built project construction plan organization and archives
Employed at LPSNRD since 1986



MIKE MASCOE

Public Information Specialist

Produce all informational materials and NRD newsletter
Coordinate media and promotional activities
Responsible for web design and content
Coordinate special events
Employed at LPSNRD since 1998



CRAIG MATULKA

Operation/Maintenance Technician

Manage Weed Control Program
Perform general operation and maintenance duties
Conduct dam safety inspections
Maintain NRD dam database
Employed at LPSNRD since 2004



LPSNRD STAFF

MIKE MURREN

Projects Coordinator

Assist with planning, design, landrights, contract preparation, construction and maintenance of district projects
Supervise Stormwater Floodplain Specialist and operation and maintenance staff
Develop and promote urban stormwater programs
Coordinate construction of flood control dams, channel restorations and flood reduction projects
Employed at LPSNRD since 2019



JARED NELSON

District Engineer

Coordinate Deadmans Run Section 205 Flood Reduction Study
Provide engineering support for NRD projects
Coordinate Salt Creek Levee project improvements
Evaluate operation of NRD projects
Employed at LPSNRD since 2018



DREW RATKOVEC

Maintenance Technician

Maintenance on NRD projects and properties
Manage Weed Control Program
Operate and maintain NRD equipment
Platte River ice monitoring
Employed at LPSNRD since 2019



DONNA REID

District Office Secretary/Program Assistant

Filing systems and maintaining electronic data storage
Administer NSWCP conservation cost-share programs
Purchase supplies and equipment for office
Provide secretarial support
Employed at LPSNRD since 1994



LPSNRD STAFF

SHAULA ROSS

GIS Specialist

Build and maintain GIS data and projects
Gather, analyze and integrate spatial information from various sources
Design and create maps
Troubleshoot GIS issues
Employed at LPSNRD since 2004



DAN SCHULZ

Resources Coordinator

Coordinate implementation of Ground Water Management Plan
Liason for Saline Wetland Conservation Partnership, NE Forest Service, NE Land Trust and Prairie Corridor on Haines Branch
Coordinate and manage public access properties
Supervise various staff and temporary employees
Employed at LPSNRD since 1982



MACLANE SCOTT

Water Resources Technician

Ground water monitoring, sampling and water levels
Well permits
Chemigation permits
Well decommissioning cost-share
Employed at LPSNRD since 2019



EVAN SISEL

Resources Technician (Lancaster County NRCS Office)

Conservation practices survey, design and layout
Conservation cost-share applications, payments and plans
Contact for NRD programs/inquiries
Employed at LPSNRD since 2018



LPSNRD STAFF

KATHY SPENCE

Administrative Assistant

Payroll
Accounting of district finances
Wellness Program coordinator
Supervise clerical staff
Recording secretary for monthly board meetings
Employed at LPSNRD since 1980



CINDY SPILINEK

Resources Technician (Cass County NRCS Office)

Conservation practices survey, design and layout
Conservation cost-share applications, payment claims and conservation plans
Contact for NRD programs/inquiries
Employed at LPSNRD since 1990



ADAM SUTTON

Environmental Educator

Assist in education presentations, programs and field trips
Assist with Family nature Nights and afterschool clubs
Coordinate Test Your Well Nights
Employed at LPSNRD since 2010



JEAN ULRICH

Field Office Secretary (Cass County NRCS Office)

Contact for NRD programs/inquiries
Conservation cost-share applications/claims
General office duties
Employed at LPSNRD since 1985



LPSNRD STAFF

CHRIS WITTHUHN

Water Resources Conservationist

Develop and implement ground water monitoring activities
Manage ground water database and reports
Ground water best management practices cost-share programs
Employed at LPSNRD since 2008



TRACY ZAYAC

Stormwater/Watershed Specialist

Provide technical assistance for stormwater and floodplain management and erosion and sediment control
Coordinate Urban Water Quality Program
Coordinate NRD Community Assistance Program
NRD/City of Lincoln project liaison
Employed at LPSNRD since 2019



JOINT PARTNERSHIP EMPLOYEES

KATIE CAMERON

Eastern Nebraska Water Resources Assessment

Plan, manage and administer the Eastern NE Water Resources Assessment (ENWRA)

Perform and coordinate technical duties

Provide hydro geologic consultation

Employed at LPSNRD since 2013



DOUG CHENEY

Corrections Crew Supervisor

Employed by the Nebraska Department of Corrections

Employed at LPSNRD since 2007



SAM GROVE

Corrections Crew Supervisor

Employed by the Nebraska Department of Corrections

Employed at LPSNRD since 2017



TOM MALMSTROM

Saline Wetlands Conservation Partnership

Coordinates shared interests between partnership entities

Employed at LPSNRD since 2003



JOINT PARTNERSHIP EMPLOYEES

JAY SEATON

NRD Forester

Oversee NRD conservation tree seedling program
Coordinate Community Forestry grant program
Provide technical forestry and tree planting assistance to public
Provide tree planting designs and plans to interested public
Employed at LPSNRD since 2012



LPSNRD SUMMER STAFF

AUTUMN WILDFEUER

Concordia Senior

Environmental Science & Business Major

