

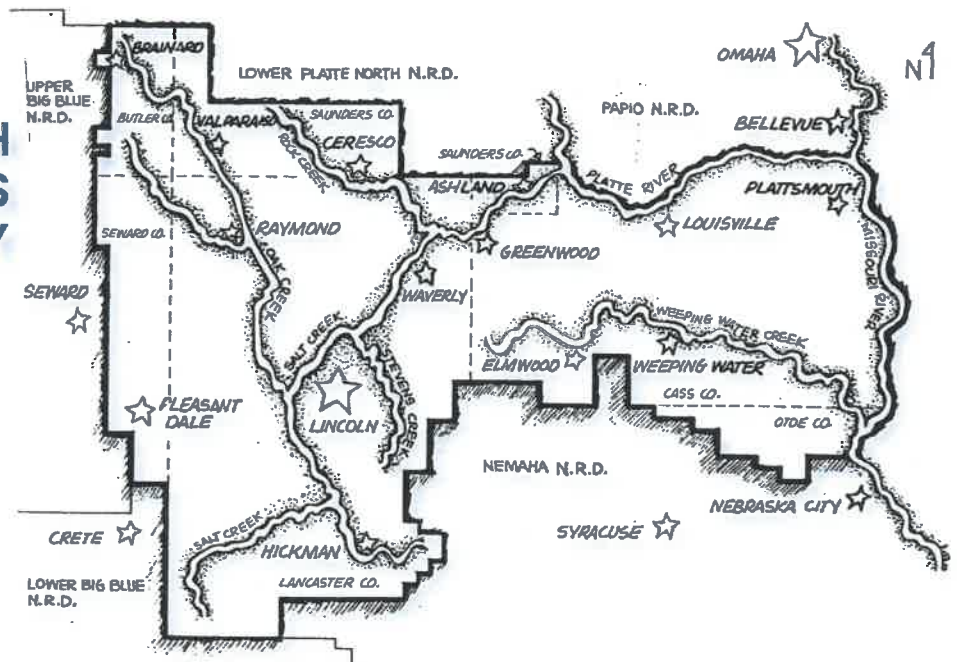


# LOWER PLATTE SOUTH natural resources district

**PAUL ZILLIG**  
General Manager  
[www.LPSNRD.org](http://www.LPSNRD.org)  
[pzillig@lpsnrd.org](mailto:pzillig@lpsnrd.org)

3125 Portia Street | P.O. Box 83581 • Lincoln, Nebraska 68501-3581 | P: 402.476.2729 • F: 402.476.6454 | [www.lpsnrd.org](http://www.lpsnrd.org)

## LOWER PLATTE SOUTH NATURAL RESOURCES DISTRICT BOUNDARY



- There are 23 districts in Nebraska -- the only state with an NRD system
- Lower Platte South is governed by a 21-member Board of Directors
- The district serves both rural and urban populations
- \$31.2 million budget for FY 2020 (July 1 - June 30th)
- 32% property taxes, 10% federal, 12% state & local
- Property tax levy of \$0.030/\$100 of actual valuation
- In 1972, the Legislature created the NRDs to develop and execute plans, facilities, works and programs in the following areas:
  - ◇ Erosion Protection and Control
  - ◇ Floodwater & Sediment Damage Prevention
  - ◇ Water Supply for Any Beneficial Use
  - ◇ Development & Management of Fish & Wildlife Habitat
  - ◇ Development & Management of Parks and Recreation Facilities
  - ◇ Flood Prevention and Control
  - ◇ Development, Management, Use and Conservation of Surface and Ground Water
  - ◇ Soil Conservation
  - ◇ Drainage & Channel Improvement
  - ◇ Forestry & Range Management
  - ◇ Pollution Control
  - ◇ Solid Waste Disposal & Sanitary Drainage
- NRDs have very broad authorities. Priorities vary in each district.
- NRDs cooperate with governmental agencies, private entities and the public

# LPSNRD PROGRAM AREAS AND ACTIVITIES

## Information & Education

- “Know Your NRD” newsletter in LJS , four weekly newspapers and electronically each February, June and October
- LPSNRD.org
- Provide information through traditional media and social media
- Environmental education, teacher workshops, earth wellness festival, nature nights
- Outdoor classroom cost-sharing

## Recreation, Fish & Wildlife

- Public access areas (lakes, trails, wetlands)
- Conservation easements
- Tree programs (seedling sales, Community Forestry Program)

## Urban Resources Management

- Urban stormwater projects
- Streambank stabilization projects
- Salt Creek levee system
- Urban Water Quality cost-sharing program
- Urban watershed basin planning with Lincoln and other communities
- Community Assistance Program

## Soil & Water Conservation

- \$1.5 million per year cost-share assistance (terraces, farm ponds, etc.)
- Buffer Strip & Cover Crop programs
- Technical assistance to landowners

## Water Resources Management

- District-wide ground water management area
- Ground water quality and quantity monitoring
- Community water system protection areas
- Well decommissioning cost-share assistance
- Fertilizer flow meter cost-share assistance
- Aerial scanning for geological data
- Flood control studies and projects

## NOTABLE PROJECTS

Antelope Valley Project with Lincoln & UNL

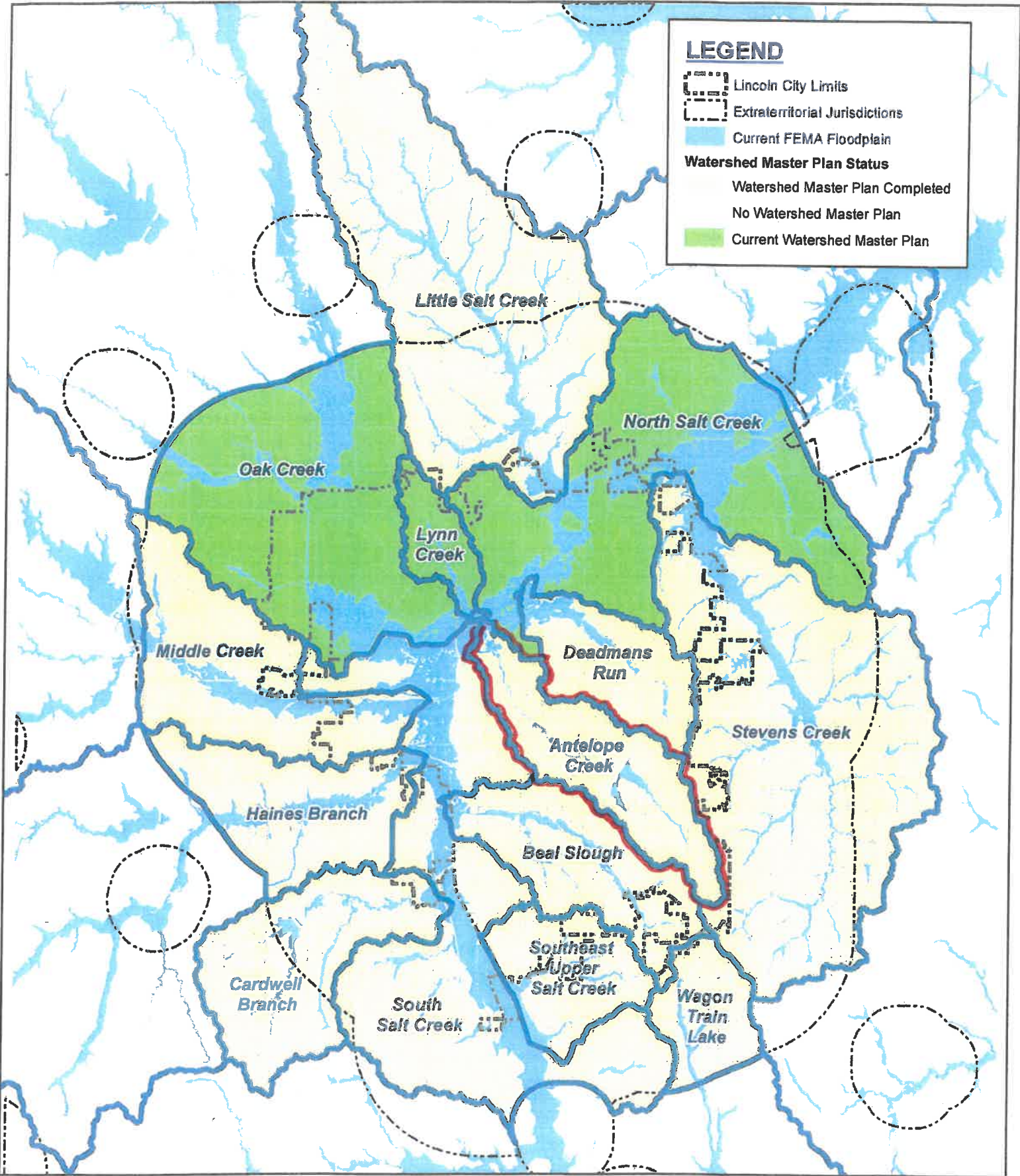
Deadmans Run Flood Reduction Project

Prairie Corridor on Haines Branch

Lied Bridge & connector trail

Salt Creek Levee Project Rehabilitation

Integrated Management Plan with State of Nebraska



# ANTELOPE VALLEY PROJECT

**SPONSORING PARTNERS:**  
**(Joint Antelope Valley Authority)**

Lower Platte South NRD  
City of Lincoln  
University of Nebraska Lincoln

**FEDERAL PARTNERS:**

US Army Corps of Engineers  
Federal Highway Administration  
Housing and Urban Development

**PROJECT PURPOSES:**

Flood Control  
Transportation Facilities Improvements  
Community Revitalization

**TOTAL COST:**

\$246 Million (2008 dollars)  
Flood Control, Transportation &  
Community Revitalization

**FLOOD CONTROL:**

\$71.1M  
\$29.6M Federal  
\$41.5M non-Federal (\$7M State NRDF)  
50% NRD – 50% City

**FUNDING:**

Mix of Local, State, Federal and Private Funds

**SCHEDULE:**

2003 to 2012

**PROJECT BENEFITS:**

- Reduced flooding threat to over 800 dwellings and businesses and 1,200 floodplain residents and removes 100-year flood plain restrictions on 400 acres, including 50 acres on the University City Campus.
- Flood Control Project planned by Army Corps of Engineers, has a benefit-cost ratio of 1.3:1; authorized for 50% funding in 2000 Water Resources Devmt. Act.
- Lessens traffic congestion and improves travel time by constructing 6 miles of new roadway and 12 new or replacement vehicle, railroad or trail/ped. bridges.
- Increases traffic safety through elimination of at-grade railroad crossings at N. 14<sup>th</sup> and N. 17<sup>th</sup> Streets.
- Removes non-University traffic from N. 16<sup>th</sup> and N. 17<sup>th</sup> Streets in the Campus
- Offers opportunities for community revitalization projects, including commercial and residential redevelopment, increasing vitality of existing residences and businesses, medical facilities and other community services.
- Provides a linear greenway connection from Antelope Park to Innovation Campus - State Fair Park with bike and pedestrian trail connections and increases public park and recreation space at Trago Park, the new Fleming Fields and Union Plaza.



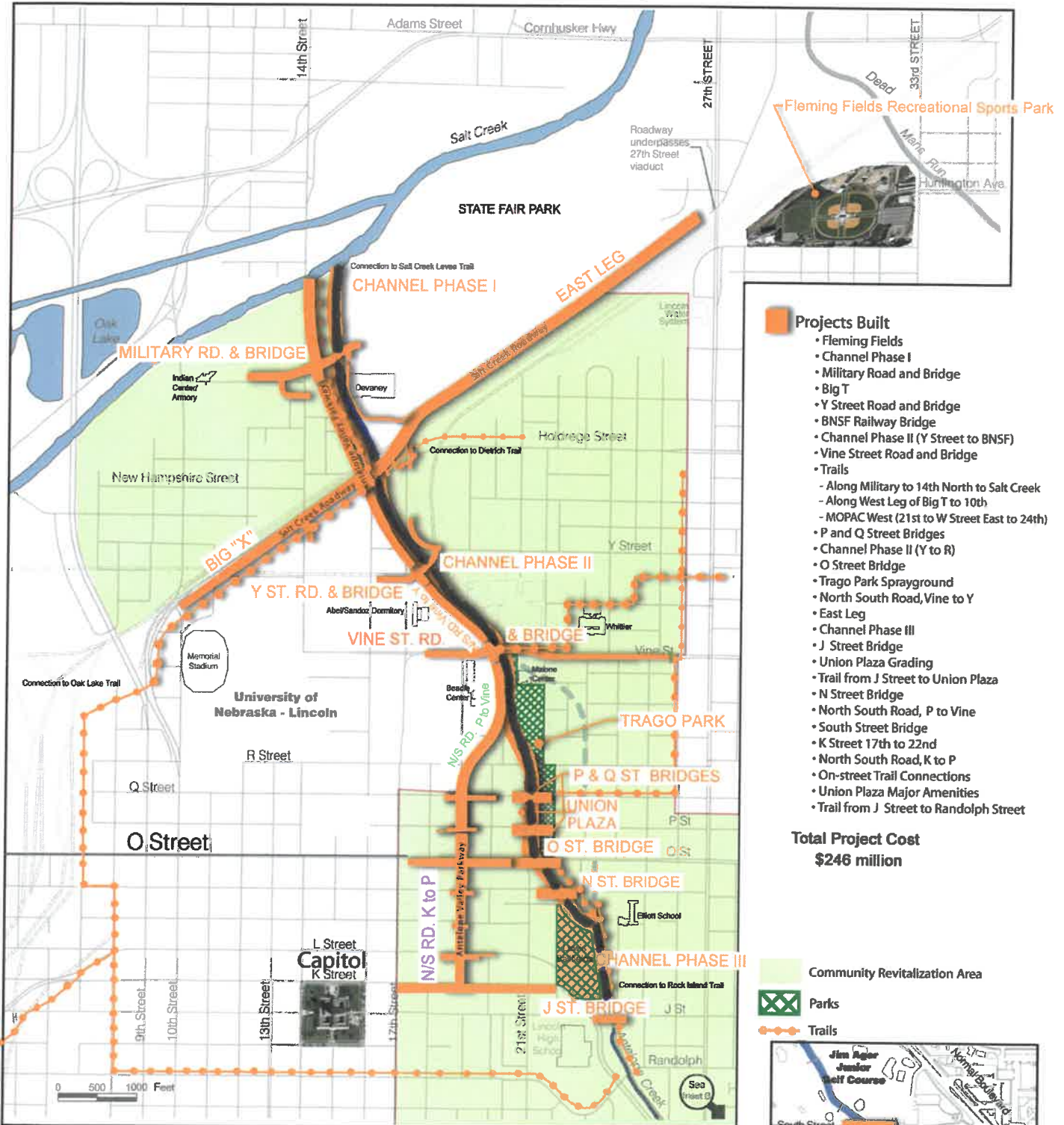
# Antelope Valley Projects

Community Revitalization • Stormwater Management • Transportation Improvements

Joint Antelope Valley Authority (JAVA)

- University of Nebraska - Lincoln
- Lower Platte South Natural Resource District
- City of Lincoln, Nebraska

## Priority Project Limits



- Projects Built**
- Fleming Fields
  - Channel Phase I
  - Military Road and Bridge
  - Big T
  - Y Street Road and Bridge
  - BNSF Railway Bridge
  - Channel Phase II (Y Street to BNSF)
  - Vine Street Road and Bridge
  - Trails
    - Along Military to 14th North to Salt Creek
    - Along West Leg of Big T to 10th
    - MOPAC West (21st to W Street East to 24th)
  - P and Q Street Bridges
  - Channel Phase II (Y to R)
  - O Street Bridge
  - Trago Park Sprayground
  - North South Road, P to Vine
  - East Leg
  - Channel Phase III
  - J Street Bridge
  - Union Plaza Grading
  - Trail from J Street to Union Plaza
  - N Street Bridge
  - North South Road, P to Vine
  - South Street Bridge
  - K Street 17th to 22nd
  - North South Road, K to P
  - On-street Trail Connections
  - Union Plaza Major Amenities
  - Trail from J Street to Randolph Street

**Total Project Cost**  
**\$246 million**

- Community Revitalization Area
- Parks
- Trails



**Inset B**

