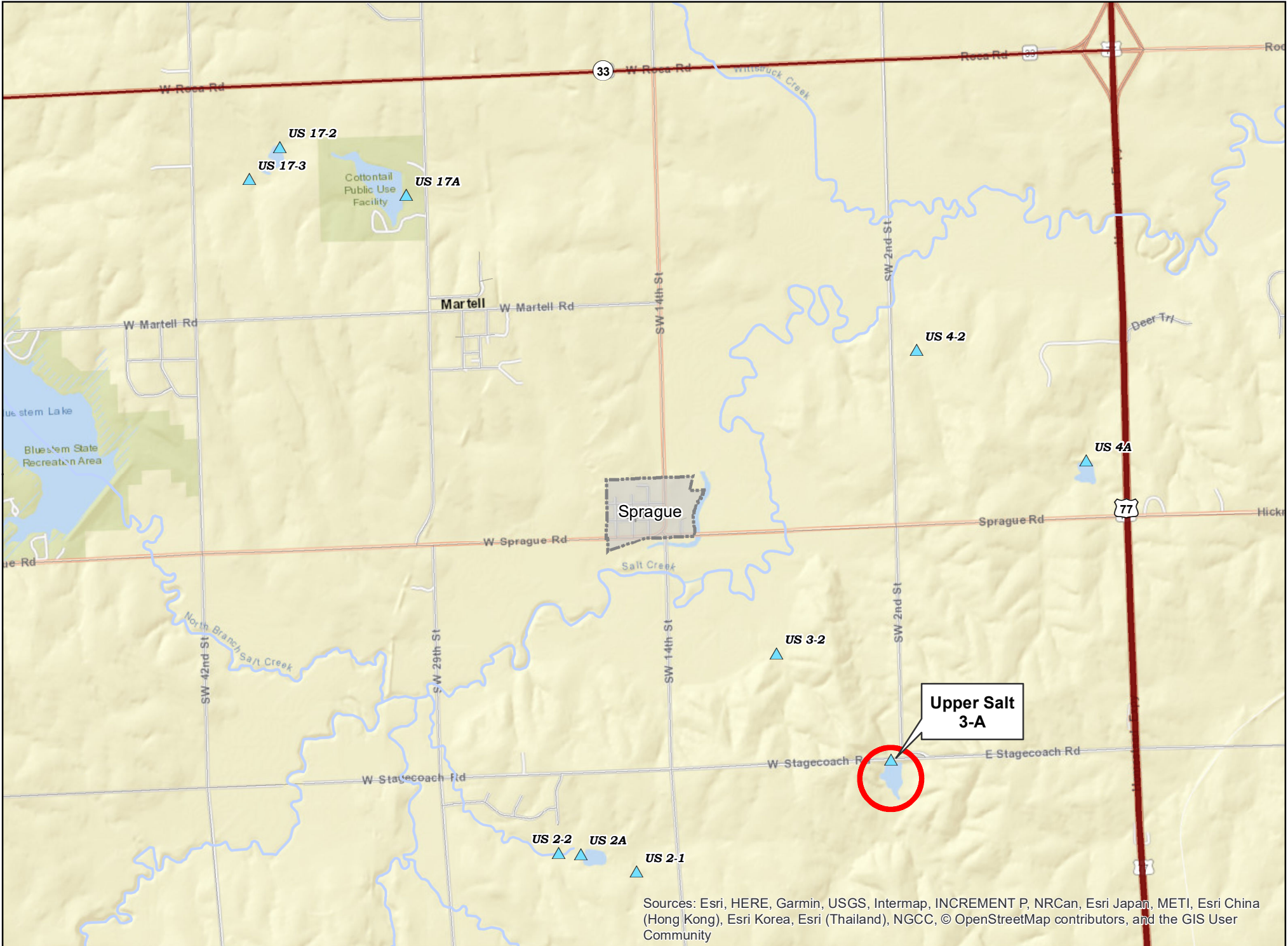




# Upper Salt 3-A, Lancaster County



Sources: Esri, HERE, Garmin, USGS, Intermap, INCREMENT P, NRCan, Esri Japan, METI, Esri China (Hong Kong), Esri Korea, Esri (Thailand), NGCC, © OpenStreetMap contributors, and the GIS User Community

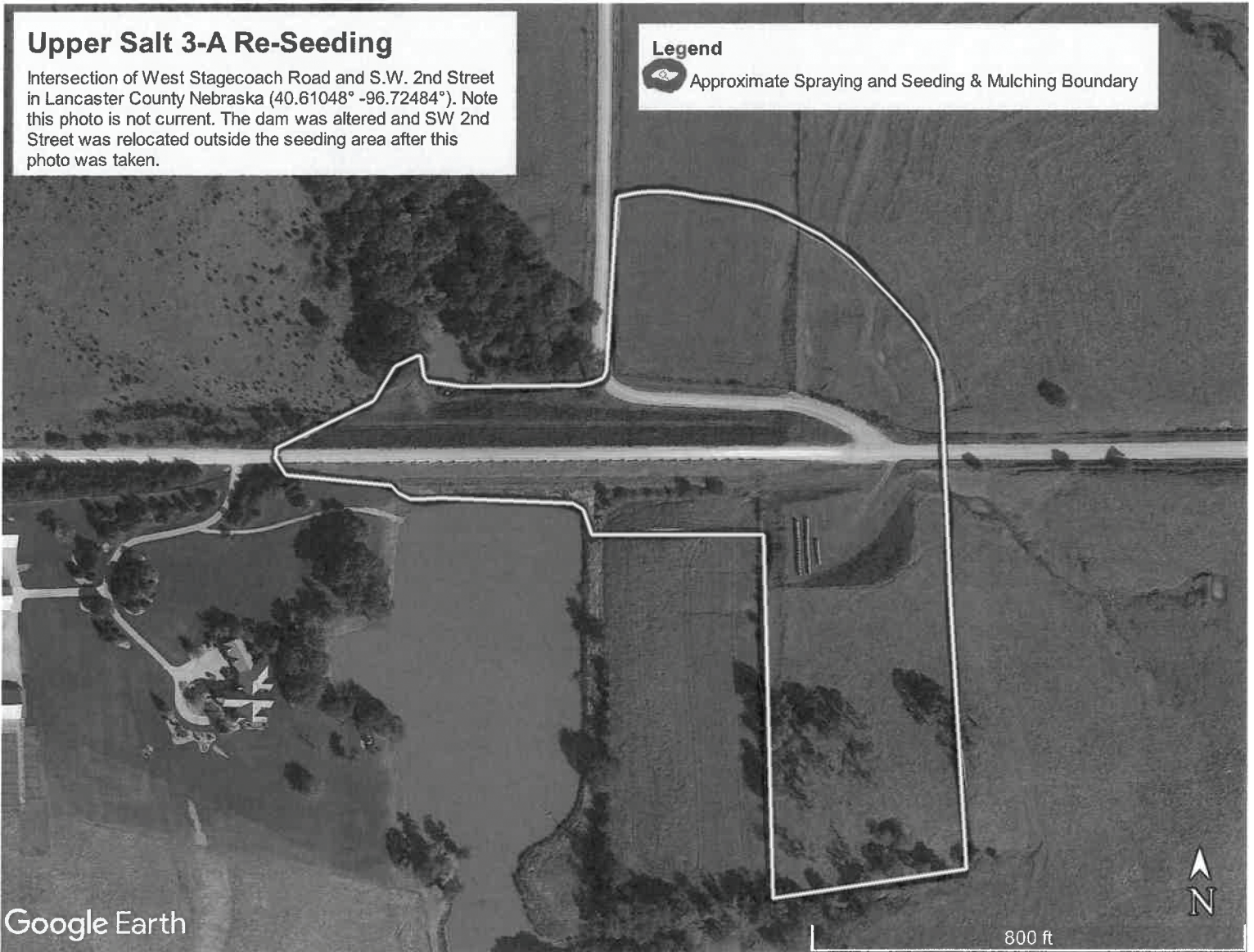
## Upper Salt 3-A Re-Seeding

Intersection of West Stagecoach Road and S.W. 2nd Street in Lancaster County Nebraska (40.61048° -96.72484°). Note this photo is not current. The dam was altered and SW 2nd Street was relocated outside the seeding area after this photo was taken.

### Legend



Approximate Spraying and Seeding & Mulching Boundary



Google Earth

800 ft

