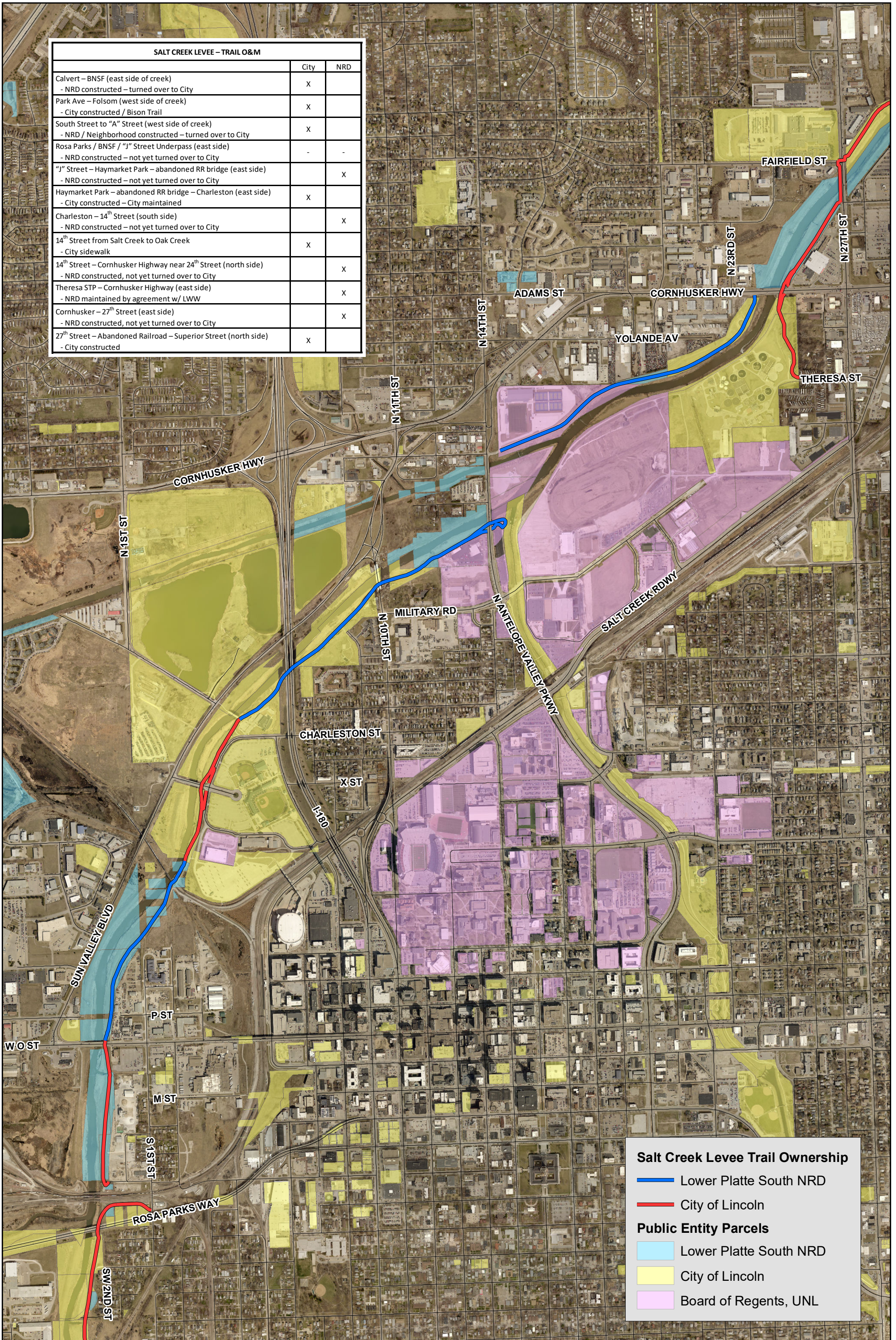




# Review Salt Creek Levee Trails - Rosa Parks Way to 27th Street



SALT CREEK LEVEE - TRAIL O&M		
	City	NRD
Calvert - BNSF (east side of creek) - NRD constructed - turned over to City	X	
Park Ave - Folsom (west side of creek) - City constructed / Bison Trail	X	
South Street to "A" Street (west side of creek) - NRD / Neighborhood constructed - turned over to City	X	
Rosa Parks / BNSF / "J" Street Underpass (east side) - NRD constructed - not yet turned over to City	-	-
"J" Street - Haymarket Park - abandoned RR bridge (east side) - NRD constructed - not yet turned over to City		X
Haymarket Park - abandoned RR bridge - Charleston (east side) - City constructed - City maintained	X	
Charleston - 14 <sup>th</sup> Street (south side) - NRD constructed - not yet turned over to City		X
14 <sup>th</sup> Street from Salt Creek to Oak Creek - City sidewalk	X	
14 <sup>th</sup> Street - Cornhusker Highway near 24 <sup>th</sup> Street (north side) - NRD constructed, not yet turned over to City		X
Theresa STP - Cornhusker Highway (east side) - NRD maintained by agreement w/ LWW		X
Cornhusker - 27 <sup>th</sup> Street (east side) - NRD constructed, not yet turned over to City		X
27 <sup>th</sup> Street - Abandoned Railroad - Superior Street (north side) - City constructed	X	



**Salt Creek Levee Trail Ownership**

- Blue line: Lower Platte South NRD
- Red line: City of Lincoln

**Public Entity Parcels**

- Light blue: Lower Platte South NRD
- Yellow: City of Lincoln
- Pink: Board of Regents, UNL